

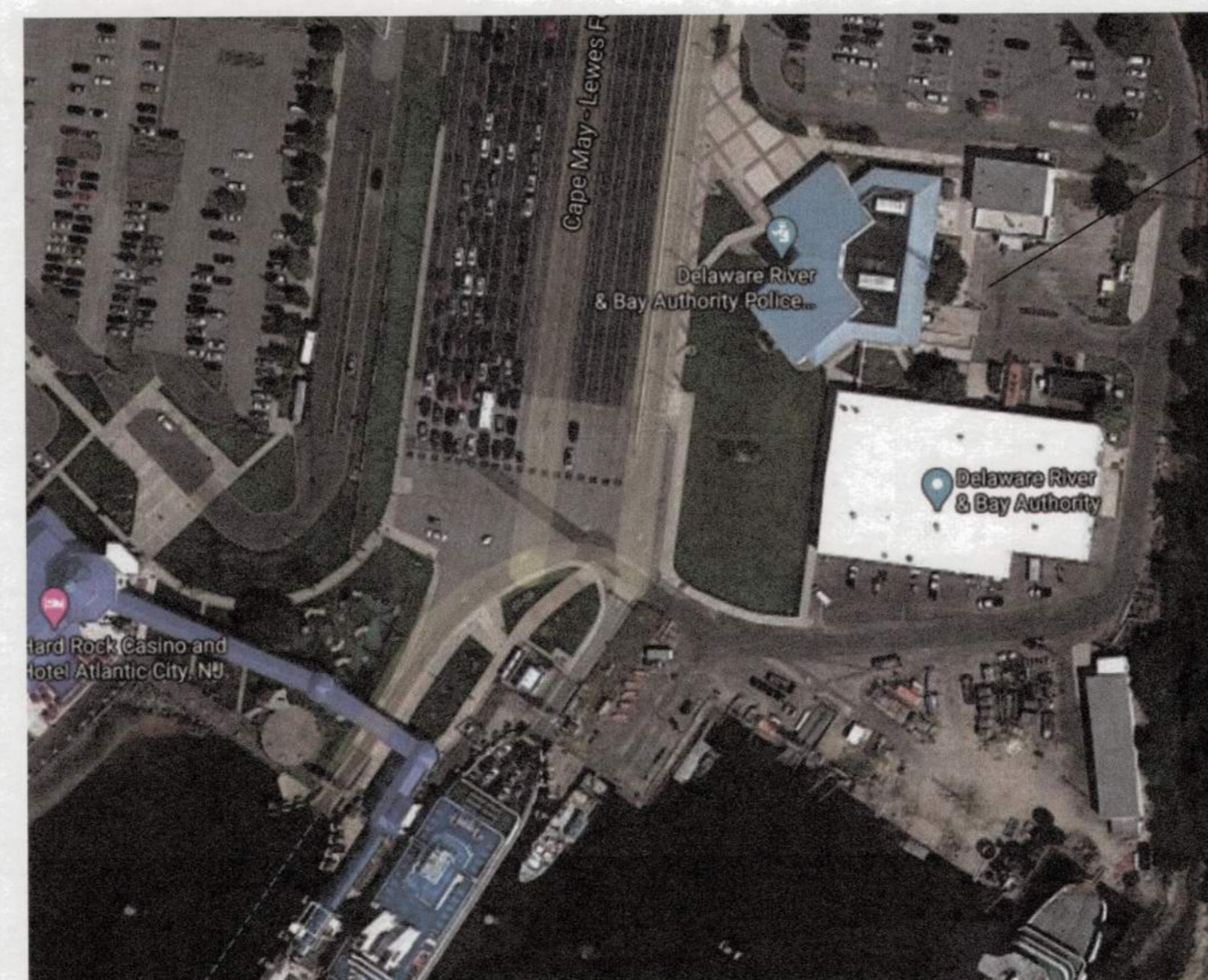
DELAWARE RIVER AND BAY AUTHORITY CAPE MAY - LEWES FERRY

CAPE MAY KITCHEN
CAPE MAY TERMINAL
NEW JERSEY



INDEX OF SHEETS

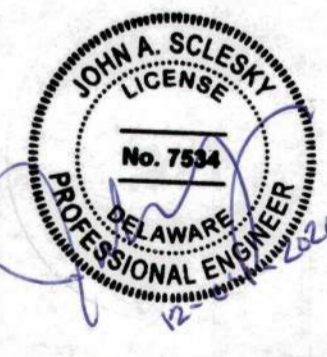
- 1 C100 COVER SHEET
- 2 C101 EXISTING CONDITIONS AND DEMOLITION PLAN
- 3 C102 CONSTRUCTION PLAN
- 4 C103 CONSTRUCTION DETAILS
- 5 C104 KITCHEN CONTAINER PLAN
- 6 E100 ELECTRICAL COVER SHEET
- 7 E101 ELECTRICAL SITE PLAN AND DETAILS



DRBA CAPE MAY-LEWES
FERRY TERMINAL
KITCHEN

1 SITE LOCATION PLAN
G-000 SCALE: NTS

CENTURY
ENGINEERING
CONSULTING ENGINEERS - PLANNERS
550 BAY ROAD
DOVER, DE 19901
Phone: (302) 734-9188 Fax: (302) 734-4589
www.centuryeng.com



RECOMMENDED _____ DATE _____

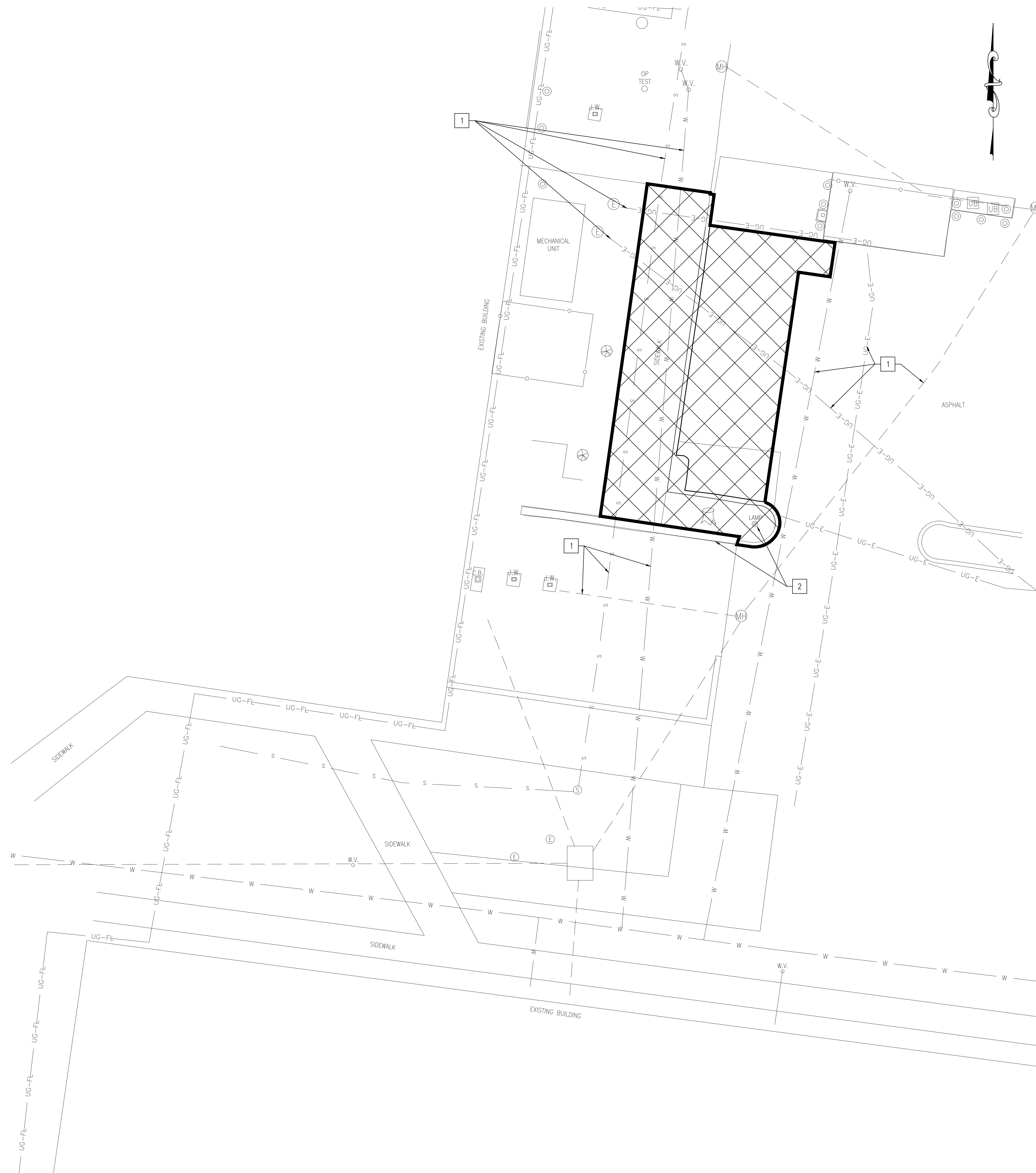
APPROVED BY _____

ISSUED FOR BIDDING _____ DATE _____

REVISION			
NO.	DATE	DESCRIPTION	BY

COVER SHEET

C100



PLAN VIEW
SCALE: 1" = 10'

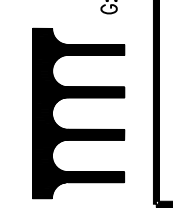
DEMOLITION NOTES:

- 1. CONTRACTOR SHALL VERIFY LOCATION AND DEPTH OF ALL UTILITIES BEFORE BEGINNING ANY WORK.
- 2. CONTRACTOR SHALL NOT DISTURB EXISTING LAMP AND WALL.

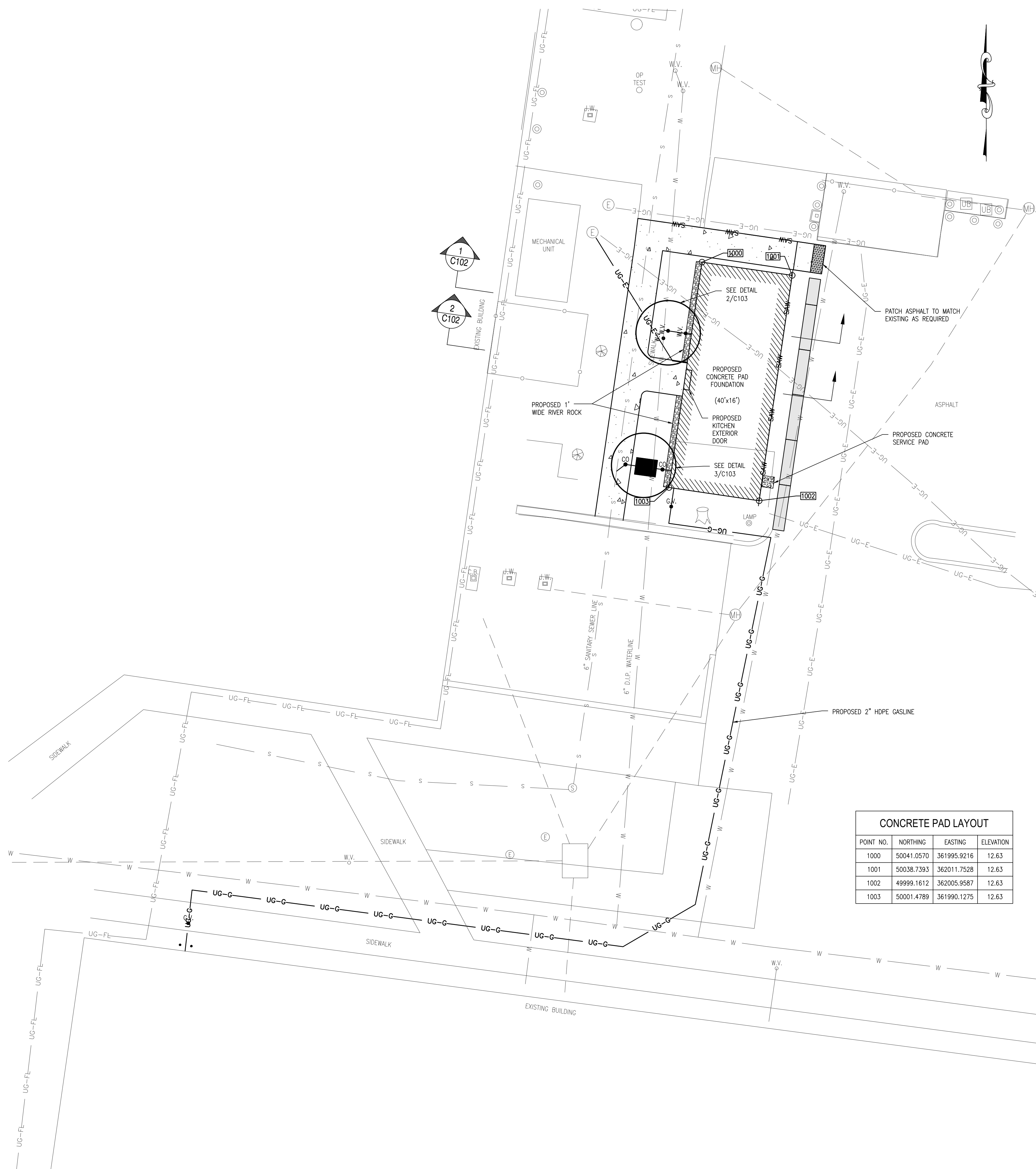
REVISION			
NO.	DATE	DESCRIPTION	BY

CENTURY
ENGINEERING
CONSULTING ENGINEERS - PLANNERS
550 BAY ROAD
DOVER, DE 19901
Phone: (302) 734-9188 Fax: (302) 734-4588
www.centuryeng.com

DELAWARE RIVER AND BAY AUTHORITY CAPE MAY AIRPORT	
CONTRACT No. CS-XX-XX CAPE MAY KITCHEN CONCEPT	
EXISTING CONDITIONS AND DEMOLITION PLAN	C101
DATE: OCTOBER 2020	SHEET NO. 2



C:\Projects\18594820 (DRB) Engineering Services\18594824 (Task 74 - Cape May Kitchen Concept Plan)\CADD FILES\Sheet\Site Plan\C102_SitePlan.dwg, 9/20/2020 11:59 AM



CONCRETE PAD LAYOUT			
POINT NO.	NORTHING	EASTING	ELEVATION
1000	50041.0570	361995.9216	12.63
1001	50038.7393	362011.7528	12.63
1002	49999.1812	362005.9587	12.63
1003	50001.4789	361990.1275	12.63

PLAN VIEW
SCALE: 1" = 10'

GENERAL NOTES

1. INFORMATION ON THE DRAWINGS PERTAINING TO EXISTING CONDITIONS HAS BEEN OBTAINED FROM FIELD OBSERVATIONS AND MAY NOT INDICATE ACTUAL EXISTING CONDITIONS IN DETAIL OR DIMENSION. THE CONTRACTOR IS RESPONSIBLE FOR DETERMINING THE ACTUAL EXISTING CONDITIONS PRIOR TO PERFORMANCE OF ANY WORK. SHOULD CONDITIONS BE DISCOVERED THAT PREVENT EXECUTION OF ANY OF THE WORK AS INDICATED, THE CONTRACTOR MUST IMMEDIATELY NOTIFY THE ENGINEER AND DRBA PROJECT MANAGER IN WRITING AND AWAIT DIRECTION BEFORE PROCEEDING WITH THE WORK.
2. ALL WORK SHALL BE PERFORMED IN ACCORDANCE WITH THE DRBA, FEDERAL, STATE AND LOCAL REQUIREMENTS.
3. FIELD VERIFY ALL EXISTING UTILITY CONDITIONS AND LOCATIONS PRIOR TO COMMENCEMENT OF WORK.
4. CONTRACTOR SHALL COORDINATE ALL UTILITY SHUTDOWNS WITH DRBA PROJECT MANAGER AND FACILITY MAINTENANCE PERSONNEL. A MINIMUM OF ONE WEEK NOTICE IS REQUIRED TO FACILITATE DRBA COORDINATION.
5. THE CONTRACTOR IS RESPONSIBLE FOR ALL SITE SAFETY DURING THIS PROJECT. ALL CONSTRUCTION, INCLUDING EXCAVATION, MUST BE COMPLETED IN ACCORDANCE WITH THE RULE AND REGULATIONS OF THE OCCUPATIONAL SAFETY AND HEALTH ACT, CFR 1926.552(b)(2), AND ALL FEDERAL, STATE AND LOCAL REQUIREMENTS.
6. THE CONTRACTOR SHALL VERIFY AND COORDINATE ALL UTILITY AND COMMUNICATION FACILITY CONNECTION LOCATIONS WITH THE PROPOSED KITCHEN FACILITY PLAN. THE LOCATION OF THE UTILITY CONNECTIONS TO THE KITCHEN FACILITY MAY BE DIFFERENT THAN SHOWN ON THIS PLAN.
7. THE CONTRACTOR SHALL RESTORE ALL AREAS AFFECTED BY THE CONSTRUCTION SHOWN HEREON AS REQUIRED BY THE PROJECT DOCUMENTS, TO A CONDITION COMPARABLE TO THAT EXISTING PRIOR TO CONSTRUCTION, AND TO THE SATISFACTION OF DRBA.
8. BEFORE EXCAVATION IS STARTED, THE CONTRACTOR SHALL CONTACT MISS UTILITY 1-800-282-8555 TO VERIFY THE LOCATION OF ALL UNDERGROUND UTILITIES TWO (2) CONSECUTIVE WORKING DAYS PRIOR TO ANY EXCAVATION. ALL EXISTING UTILITIES SHALL BE PROTECTED AND TEMPORARILY SUPPORTED OR RELOCATED AS NECESSARY TO COMPLETE THE WORK IN ACCORDANCE WITH THE PERTINENT DRBA/UTILITY REQUIREMENTS. ANY UTILITIES DAMAGED BY THE CONTRACTOR SHALL BE PROMPTLY AND FULLY RESTORED TO THE SATISFACTION OF DRBA.
9. THE CONTRACTOR IS SOLELY RESPONSIBLE TO OBTAINING OFF-SITE SPOIL AREAS FOR LEGAL DISPOSAL OF EXCESS MATERIAL NOT ACCEPTED DRBA OR UNSUITABLE MATERIALS AS NECESSARY IN ACCORDANCE WITH ALL FEDERAL, STATE AND LOCAL REQUIREMENTS.
10. SITE MATERIAL LAY DOWN PLAN MUST BE PROVIDED TO DRBA PROJECT MANAGER FOR APPROVAL.

MAINTENANCE OF TRAFFIC NOTES

1. TRAFFIC CONTROL PLAN WITHIN THE PARKING AREA/CONSTRUCTION SITE IS TO BE PROVIDED TO DRBA PROJECT MANAGER FOR APPROVAL.
2. PARKING FOR THE DRBA POLICE STAFF MUST BE AVAILABLE AT ALL TIMES.

GENERAL CONSTRUCTION NOTES:

1. CONTRACTOR SHALL VERIFY LOCATION AND DEPTH OF ALL UTILITIES BEFORE BEGINNING ANY WORK.
2. CONTRACTOR SHALL NOT DISTURB EXISTING LAMP AND WALL.

GENERAL NOTES: SITE WORK AND UTILITIES

1. TRACER WIRE SHALL BE PROVIDED ON ALL UNDERGROUND UTILITIES. SIZE AND COLOR SHALL BE PER UTILITY AUTHORITY DESIGNATION STANDARDS.
2. THE CONTRACTOR SHALL BE RESPONSIBLE FOR INSTALLATION OF ALL CONDUIT SHOWN.
3. CONTRACTOR SHALL COORDINATE WORK WITH AND BETWEEN ALL TRADES.

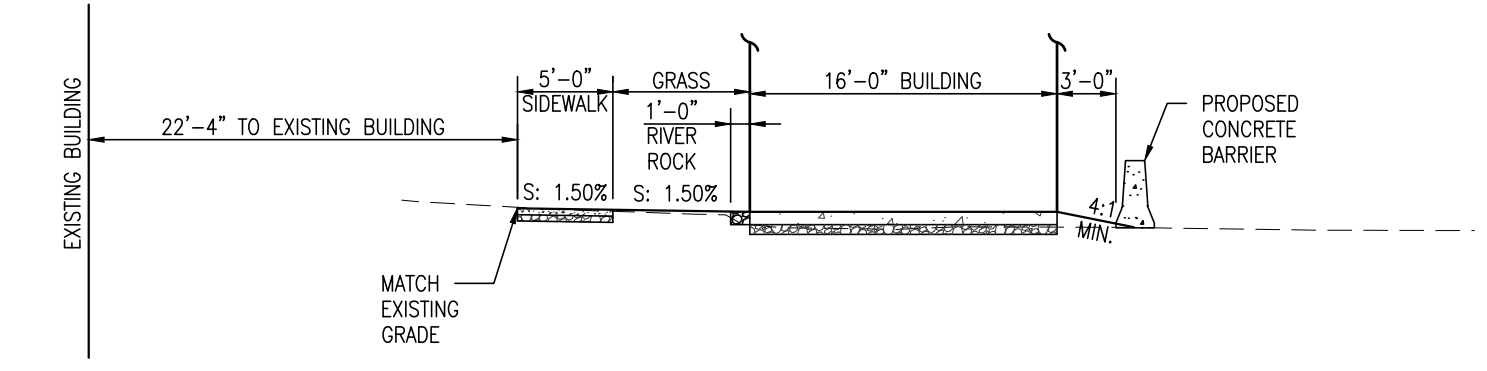
UTILITY NOTES: WATER

1. CONNECTION TO THE EXISTING WATER LINE USING A WET LINE TAP. POWER SEAL TAPPING SLEEVE AND VALVE.
2. ALL MATERIALS IN CONTACT WITH POTABLE WATER SHALL COMPLY WITH NSF/ANSI STANDARDS 60 AND 61.
3. ALL DOMESTIC WATER SERVICE PIPES SHALL BE 2" SDR9.
4. 3' MINIMUM PIPE COVER.

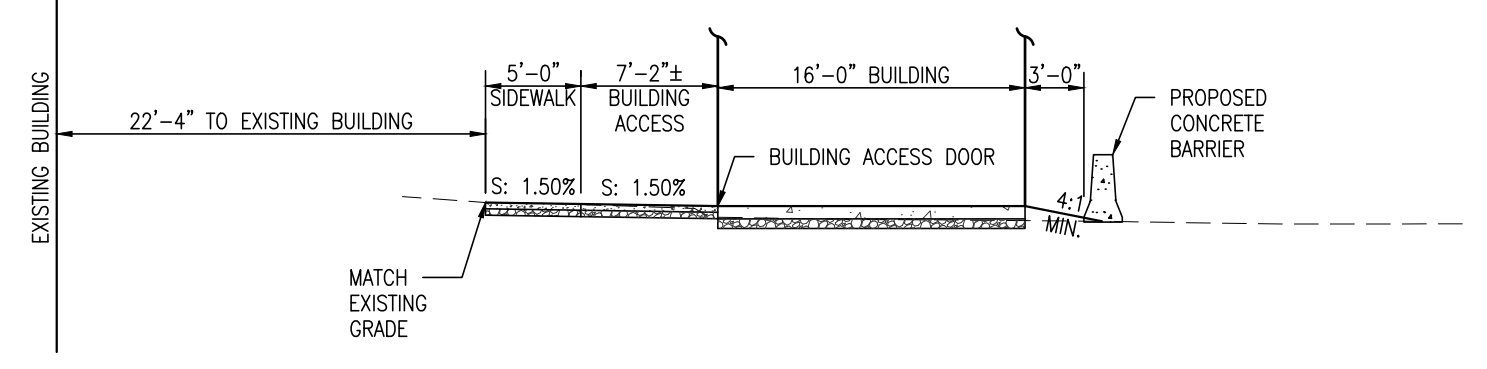
UTILITY NOTES: SANITARY SEWER

1. CONNECTION TO THE EXISTING SANITARY SEWER USING LATERAL SADDLE CONNECTION. FERROCO TSW-4 FLEXIBLE TAP SADDLE W/IE.
 2. 3' MINIMUM PIPE COVER.
- UTILITY NOTES: NATURAL GAS**
1. NATURAL GAS CONNECTION SHALL BE MADE USING STEEL PIPE WITH INTEGRAL VALVE.
 2. DISTRIBUTION LINE TO KITCHEN FACILITY MAY TRANSITION TO HDPE.
 3. COORDINATE THIS CONNECTION WITH NATURAL GAS SUPPLIER TO COMPLY WITH ALL MATERIAL TESTING DETAILS/REQUIREMENTS.
- UTILITY NOTES: ELECTRICAL**

LEGEND	EXISTING	PROPOSED
BUILDING		
WATER VALVE	W.V.	N/A
MANHOLE		N/A
SANITARY SEWER MANHOLE		N/A
JUNCTION WELL		N/A
CATCH BASIN		N/A
ELECTRIC MANHOLE		N/A
POST		N/A
LANDSCAPING		N/A
STUMP		N/A
UTILITY BOX		N/A
LAMP		N/A
SANITARY SEWER LINE		
UNDERGROUND ELECTRIC		
STORM DRAINAGE		
GAS LINE		
FUEL LINE		
WATER LINE		
SIDEWALK		
DEMOLITION	N/A	
JERSEY BARRIER	N/A	
SAWCUT	N/A	



1 TYPICAL SECTION - GRASS
SCALE: 1" = 10'



2 TYPICAL SECTION - BUILDING ACCESS
SCALE: 1" = 10'

REVISION			
NO.	DATE	DESCRIPTION	BY

CENTURY ENGINEERING
CONSULTING ENGINEERS - PLANNERS
550 BAY ROAD
DOVER, DE 19901
Phone: (302) 734-9188 Fax: (302) 734-4588
www.centuryeng.com

DELAWARE RIVER AND BAY AUTHORITY
CAPE MAY AIRPORT

CONTRACT No. CS-XX-XX
CAPE MAY KITCHEN CONCEPT

CONSTRUCTION PLAN C102

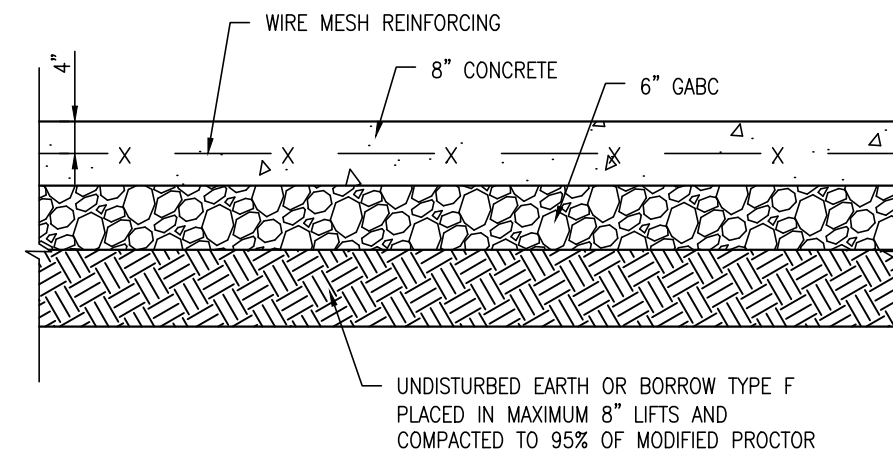
DATE: OCTOBER 2020 SCALE: 1" = 10' SHEET NO. 3

GENERAL CONCRETE PAD NOTES

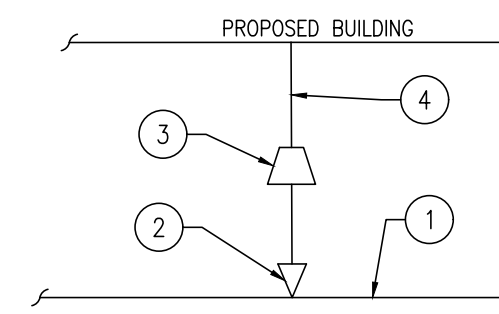
1. ALL EXPOSED CONCRETE PAD EDGES SHALL HAVE A 1" CHAMFER.
2. ALL EARTH SUBGRADE SHALL BE PROOF ROLLED. ANY SOFT AREAS SHALL BE UNDERCUT AND BACKFILLED WITH SELECT FILL.

CONCRETE

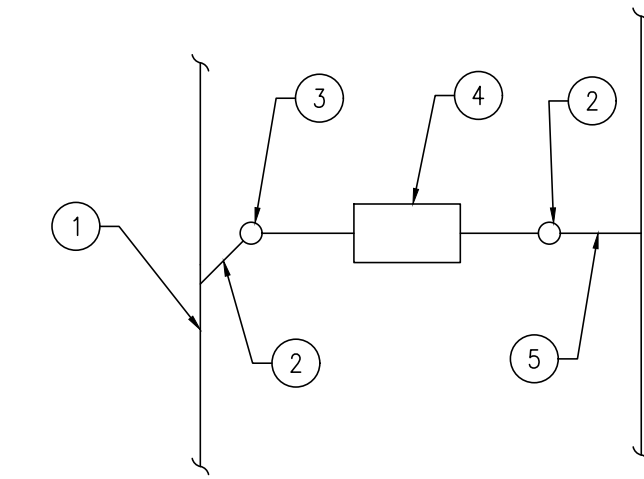
1. ALL CONCRETE WORK SHALL BE IN ACCORDANCE WITH ACI 301 - "SPECIFICATIONS FOR STRUCTURAL CONCRETE".
2. CONCRETE DESIGN MIXES/STRENGTHS SHALL HAVE A MINIMUM COMPRESSIVE STRENGTH OF $F_c = 3,500$ PSI, UNLESS STATED OTHERWISE. ALL CONCRETE SHALL CONTAIN A WATER-REDUCING ADMIXTURE. CALCIUM CHLORIDE IS PROHIBITED.
3. WELDED WIRE FABRIC SHALL BE SMOOTH OR DEFORMED AND CONFORM TO ASTM A1064 AND BE A MINIMUM WVF6X6-W1.4XW1.4. ALL WELDED WIRE FABRIC SHALL BE SPLICED SO THAT THE OVERLAP OF THE OUTERMOST CROSS WIRES OF EACH ADJOINING SHEET IS NOT LESS THAN THE SPACING OF THE CROSS WIRES PLUS TWO INCHES.
4. WELDED WIRE FABRIC SHALL BE INSTALLED AT A DEPTH OF $2/3$ THE THICKNESS OF THE CONCRETE SECTION.
5. NO CONCRETE SHALL BE PLACED IN WATER OR ON FROZEN SUBGRADE.
6. THE REQUIRED AIR CONTENT FOR ALL CONCRETE SHALL BE 3% TO 7%.
7. SPACING OF SIDEWALK EXPANSION JOINTS SHALL BE 15'. SIDEWALK SHALL HAVE TOOL JOINTS EVERY 5'.



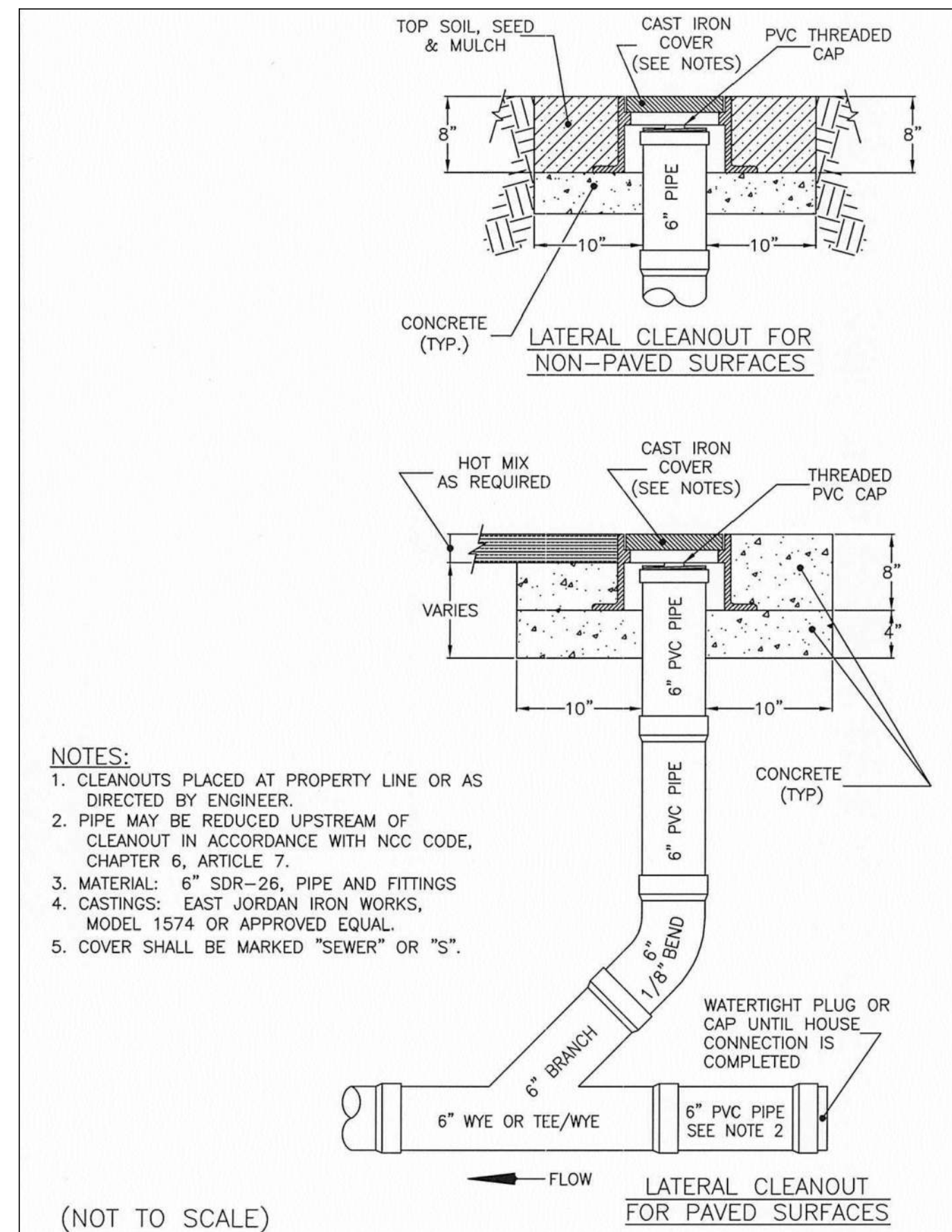
1 CONCRETE PAD SECTION
C103 SCALE: NOT TO SCALE



2 WATER DEVICE LAYOUT
C103 SCALE: NOT TO SCALE



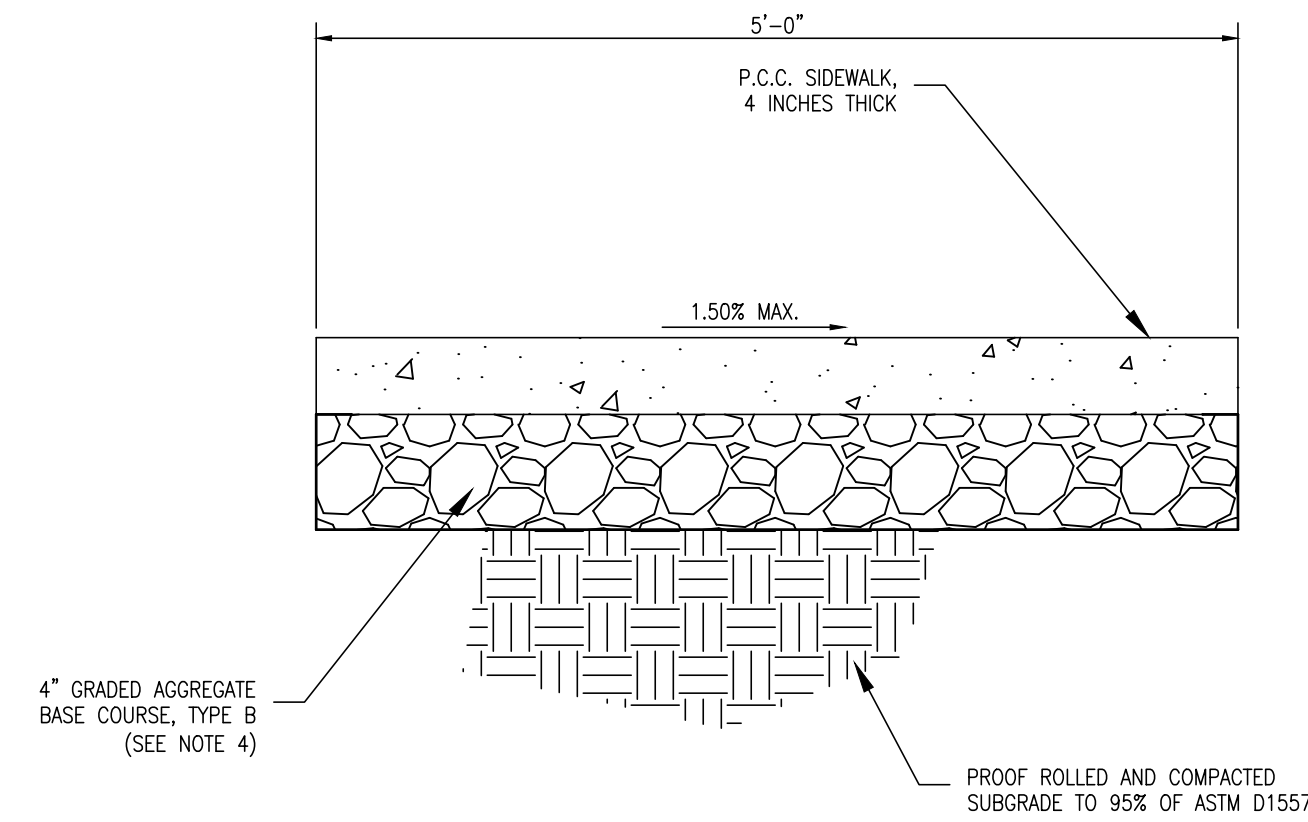
3 SANITARY SEWER CONNECTION LAYOUT
C103 SCALE: NOT TO SCALE



- NOTES:**
1. CLEANOUTS PLACED AT PROPERTY LINE OR AS DIRECTED BY ENGINEER.
 2. PIPE MAY BE REDUCED UPSTREAM OF CLEANOUT IN ACCORDANCE WITH NCC CODE, CHAPTER 6, ARTICLE 7.
 3. MATERIAL: 6" SDR-26, PIPE AND FITTINGS
 4. CASTINGS: EAST JORDAN IRON WORKS, MODEL 1574 OR APPROVED EQUAL.
 5. COVER SHALL BE MARKED "SEWER" OR "S".

(NOT TO SCALE)

4 SANITARY SEWER CLEANOUT DETAIL
C103 SCALE: NOT TO SCALE



- NOTES:**
1. MARK IN 5' SQUARES, USE CORK EXPANSION JOINTS AT INTERVALS NOT GREATER THAN 15'.
 2. CONCRETE SIDEWALKS SHALL BE CONSTRUCTED AS PER DELDOT SPECIFICATIONS.
 3. CROSS SLOPE OF SIDEWALK SHALL BE 1% MIN., 1.5% MAX. LONGITUDINAL SLOPE AS SHOWN ON PLANS.

5 SIDEWALK DETAIL
C103 SCALE: NOT TO SCALE

REVISION			
NO.	DATE	DESCRIPTION	BY

CENTURY ENGINEERING
CONSULTING ENGINEERS - PLANNERS
550 BAY ROAD
DOVER, DE 19901
Phone: (302) 734-9188 Fax: (302) 734-4588
www.centuryeng.com

DELAWARE RIVER AND BAY AUTHORITY
CAPE MAY AIRPORT

CONTRACT No. CS-XX-XX
CAPE MAY KITCHEN CONCEPT

CONSTRUCTION DETAILS

C103

DATE: OCTOBER 2020 SCALE: AS NOTED SHEET NO. 4



