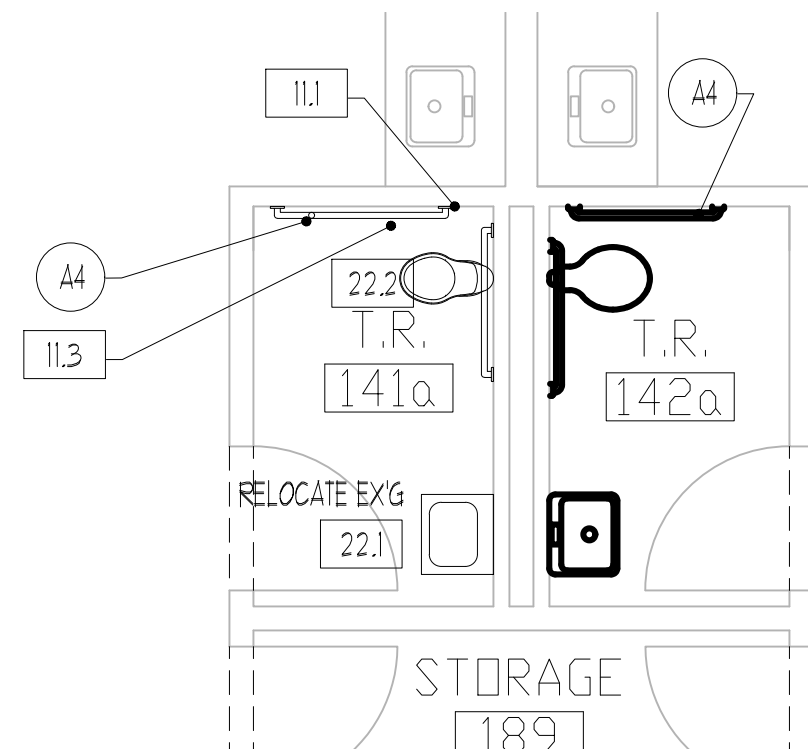
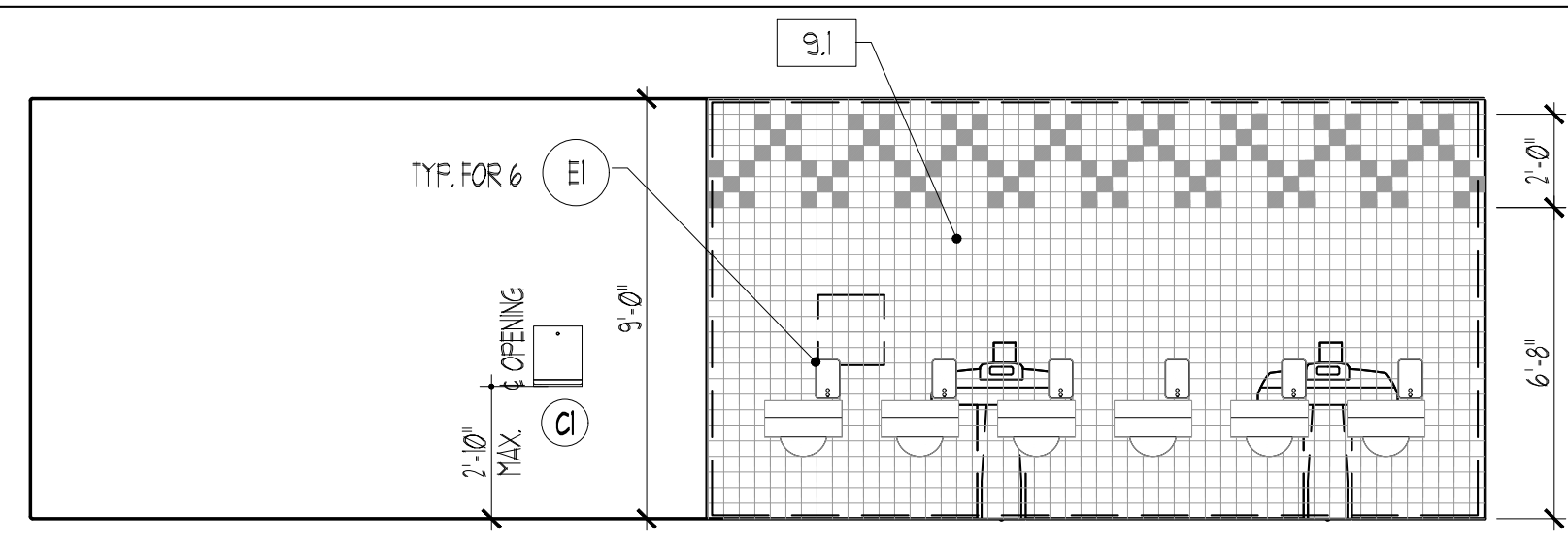


2 NEW WORK - T.R. 143 & 145 PARTIAL FLOOR PLAN
1/4"=1'-0"



1 NEW WORK - T.R. 141a, 142a PARTIAL FLOOR PLAN
1/4"=1'-0"

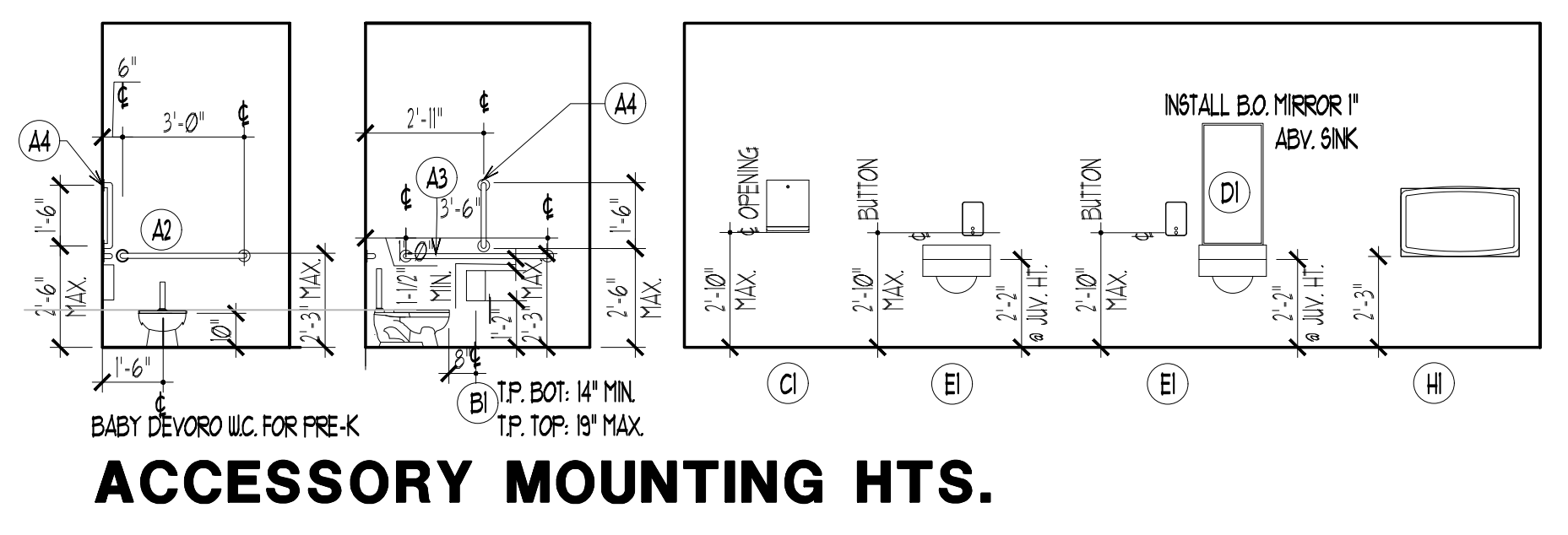


3 INT. ELEVATION - T.R. 143 SHOWN 145 OPP. HAND
1/4"=1'-0"

DRAWING KEY NOTES - NEW WORK

- DEMOLITION NOTES: NOTES APPLY TO DEMO PLANS AND DEMO ELEVATIONS
- 4.1 CMU WALL: INFILL DEMO'D WALL SECTIONS W/ NEW 4" CMU.
 - 9.1 WALL FINISH C.T.: PATCH AND REPAIR EX'G THIN SET C.T. FINISH. EX'G 4-1/4" x 4-1/4" TILES.
 - 11.1 ACCESSORIES, T.R.: RELOCATE EX'G GRAB BARS, 42" HORIZONTAL AND 36" HORIZONTAL OR COMBINATION LIT
 - 11.2 ACCESSORIES, T.R.: RELOCATE EX'G PAPER TOWEL DISPENSER
 - 11.3 ACCESSORIES, T.R.: RELOCATE EX'G T.P. DISPENSER
 - 22.1 PLUMBING FIXTURES: NEW LAV. SEE PLUMBING DWG.
 - 22.2 PLUMBING FIXTURES: NEW W.C. SEE PLUMBING DWG.
 - 22.3 PLUMBING FIXTURES: NEW URINAL. SEE PLUMBING DWG.

| TOILET ROOM ACCESSORY SCHEDULE | | | | | | | |
|--------------------------------|-----------------|-----------|-------------------------|-----------------------|--------------------|--------------------|-----------------------------|
| RM. NO. | ROOM NAME | GRAB BARS | TOILET TISSUE DISPENSER | PAPER TOWEL DISPENSER | MIRROR | SOAP DISPENSER | KOALA BABY CHANGING STATION |
| | | A1 | B1 | C1 | D1 | E1 | H1 |
| | | 80'-2" | 80'-2" | 80'-2" | RELOCATE EX'G | RELOCATE EX'G | RELOCATE EX'G |
| | | 36" | 42" | 18" | CONTRACTOR INSTALL | CONTRACTOR INSTALL | CONTRACTOR INSTALL |
| 141a | INDIVIDUAL TR. | RELOCATE | RELOCATE | • | • | • | • |
| 141b | INDIVIDUAL TR. | RELOCATE | RELOCATE | • | • | • | • |
| 143 | GIRLS GROUP TR. | RELOCATE | RELOCATE | • | • | (6) | • |
| 145 | BOYS GROUP TR. | RELOCATE | RELOCATE | • | • | (6) | • |

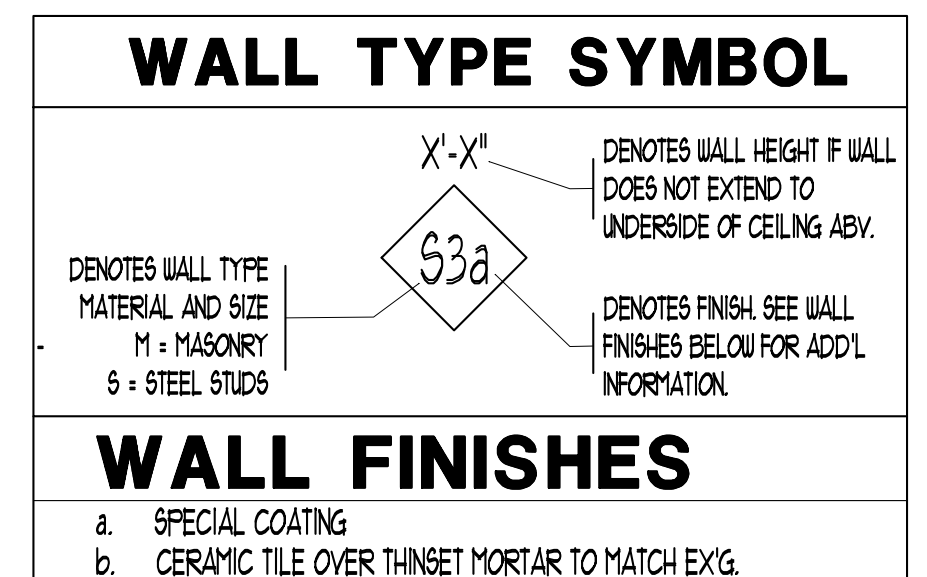


ACCESSORY MOUNTING HTS.

| ROOM FINISH SCHEDULE - TOILET ROOM RENOVATIONS | | | | | | | | | | | | | | | | | | | | | | |
|--|--------------------|------------|------------|------------|----------------|------|------------|-----------|------------|--------|----------|------------|----------|----------|----------|-----|---------|--------|---------|---------|-----|-----------|
| ROOM NO. | ROOM NAME | EX'G FLOOR | | | NEW FLOOR | | | EX'G BASE | | | NEW BASE | | | WALL | | | CEILING | | | REMARKS | | |
| | | EX'G | FIN. | NOTE | FINISH | TYPE | COLOR | EX'G | NOTE | FINISH | HT. | COLOR | MAT. | FINISH | COLOR | HT. | MAT. | FINISH | COLOR | | HT. | |
| 131 | PRE-K | CONC. | CARPET | PATCH | VCT # 8NK ONLY | 1 | MATCH EX'G | V.C.B. | PATCH | V.C.B. | 4" | MATCH EX'G | AR. GUB. | SP. COAT | BY OWNER | N/A | N/A | N/A | N/A | N/A | N/A | NOTE 1, 2 |
| 138 | OFFICE | CONC. | CARPET | PATCH | N/A | N/A | N/A | V.C.B. | EX'G REMAN | N/A | N/A | N/A | N/A | N/A | N/A | N/A | N/A | N/A | N/A | N/A | N/A | NOTE 1, 2 |
| 140 | NURSE'S OFFICE | CONC. | CARPET | PATCH | VCT # 8NK ONLY | 1 | MATCH EX'G | V.C.B. | PATCH | V.C.B. | 4" | MATCH EX'G | AR. GUB. | SP. COAT | BY OWNER | N/A | N/A | N/A | N/A | N/A | N/A | NOTE 1, 2 |
| 141 | PRE-K | CONC. | CARPET/VCT | EX'G REMAN | N/A | N/A | N/A | V.C.B. | EX'G REMAN | N/A | N/A | N/A | N/A | N/A | N/A | N/A | N/A | N/A | N/A | N/A | N/A | |
| 141a | INDIVIDUAL TR. | CONC. | C.T. | EX'G REMAN | N/A | N/A | N/A | C.T. | EX'G REMAN | N/A | N/A | N/A | N/A | N/A | N/A | N/A | N/A | N/A | N/A | N/A | N/A | |
| 142 | PRE-K | CONC. | CARPET/VCT | EX'G REMAN | N/A | N/A | N/A | V.C.B. | EX'G REMAN | N/A | N/A | N/A | N/A | N/A | N/A | N/A | N/A | N/A | N/A | N/A | N/A | |
| 142a | INDIVIDUAL TR. | CONC. | C.T. | EX'G REMAN | N/A | N/A | N/A | C.T. | EX'G REMAN | N/A | N/A | N/A | N/A | N/A | N/A | N/A | N/A | N/A | N/A | N/A | N/A | |
| 143 | GIRLS GROUP TR. | CONC. | C.T. | EX'G REMAN | N/A | N/A | N/A | C.T. | EX'G REMAN | N/A | N/A | N/A | N/A | N/A | N/A | N/A | N/A | N/A | N/A | N/A | N/A | NOTE 4 |
| 145 | BOYS GROUP TR. | CONC. | C.T. | EX'G REMAN | N/A | N/A | N/A | C.T. | EX'G REMAN | N/A | N/A | N/A | N/A | N/A | N/A | N/A | N/A | N/A | N/A | N/A | N/A | NOTE 4 |
| 148 | RELATED ARTS CLRM. | CONC. | RUBBER | EX'G REMAN | N/A | N/A | N/A | V.C.B. | EX'G REMAN | N/A | N/A | N/A | N/A | N/A | N/A | N/A | PRE-FIN | WHITE | SEE RCP | N/A | N/A | NOTE 1, 3 |
| 149 | PRE-K | CONC. | CARPET/VCT | EX'G REMAN | N/A | N/A | N/A | V.C.B. | EX'G REMAN | N/A | N/A | N/A | N/A | N/A | N/A | N/A | N/A | N/A | N/A | N/A | N/A | |
| 150 | PRE-K | CONC. | CARPET/VCT | EX'G REMAN | N/A | N/A | N/A | V.C.B. | EX'G REMAN | N/A | N/A | N/A | N/A | N/A | N/A | N/A | N/A | N/A | N/A | N/A | N/A | NOTE 3 |
| 151 | PRE-K | CONC. | CARPET/VCT | EX'G REMAN | N/A | N/A | N/A | V.C.B. | EX'G REMAN | N/A | N/A | N/A | N/A | N/A | N/A | N/A | N/A | N/A | N/A | N/A | N/A | |
| 152 | PRE-K | CONC. | CARPET/VCT | EX'G REMAN | N/A | N/A | N/A | V.C.B. | EX'G REMAN | N/A | N/A | N/A | N/A | N/A | N/A | N/A | N/A | N/A | N/A | N/A | N/A | |

- ROOM FINISH SCHEDULE NOTES - GENERAL:**
- AR. GUB. INDICATES ABUSE RESISTANT, MOLD RESISTANT GUB.
 - PAINTING AND SPECIAL COATING: ALL NEWLY EXPOSED UNFINISHED SURFACES, INCLUDING WALLS AND EXPOSED CEILING CONSTRUCTION TO BE PAINTED WITH A SPECIAL COATING FROMER COAT PLUS FINISH COATS AS NOTED.
 - FLAME SPREAD AND SMOKE DEVELOPED INDEXES FOR WALLS AND CEILING FINISHES SHALL BE IN ACCORDANCE WITH IRC. ROOM'S AS FOLLOWS: MATERIALS SHALL BE TESTED IN ACCORDANCE WITH ASTM E84 OR UL 703. FLAME SPREAD - 100 MAX. SMOKE DEVELOPED - 450 MAX.
 - FINISHES DAMAGED OR AFFECTED BY THE SCOPE OF THE CONTRACT SHALL BE RESTORED TO MATCH THE EXISTING CONSTRUCTION AND WHERE PATCH TO ACCOMMODATE PROPOSED CONSTRUCTION IS INDICATED. PATCH AND REPAIR ANY DAMAGED FINISHES AND PROVIDE NEW FINISHES TO MATCH EX'G.
 - THE SCOPE OF THE WORK REQUIRES MODIFICATIONS TO THE EXISTING CONSTRUCTION. EXISTING ELECTRICAL DEVICES, RECEPTACLES, SWITCHES, CEILING WIRE SYSTEMS, MECHANICAL DIFFUSERS, DUCTWORK, CEILING MOUNTED EQUIPMENT, FIRE ALARM DEVICES AND SPEAKERS SHALL BE SALVAGED, DISCONNECTED AND RELOCATED AS REQUIRED TO ACCOMMODATE THE WORK OF THIS CONTRACT.
 - EX'G FIRE ALARM AND FIRE SUPPRESSION DEVICES SHALL BE DISCONNECTED AND RECONNECTED AS REQUIRED TO ACCOMMODATE THE WORK OF THIS CONTRACT.
 - COLORS SHALL BE SELECTED BY THE OWNER. COLOR SELECTIONS SHALL BE FROM THE FULL RANGE OF COLORS REFERENCED WITHIN THE CONTRACT SPECIFICATIONS.
 - PATCH AND REPAIR EX'G WALLS AFFECTED BY NEW CONSTRUCTION.
 - TYP. FINISHES NOTED APPLY TO NEW WORK WITHIN EACH ROOM. REMAINDER OF ROOM SHALL BE PATCH AND REPAIR.

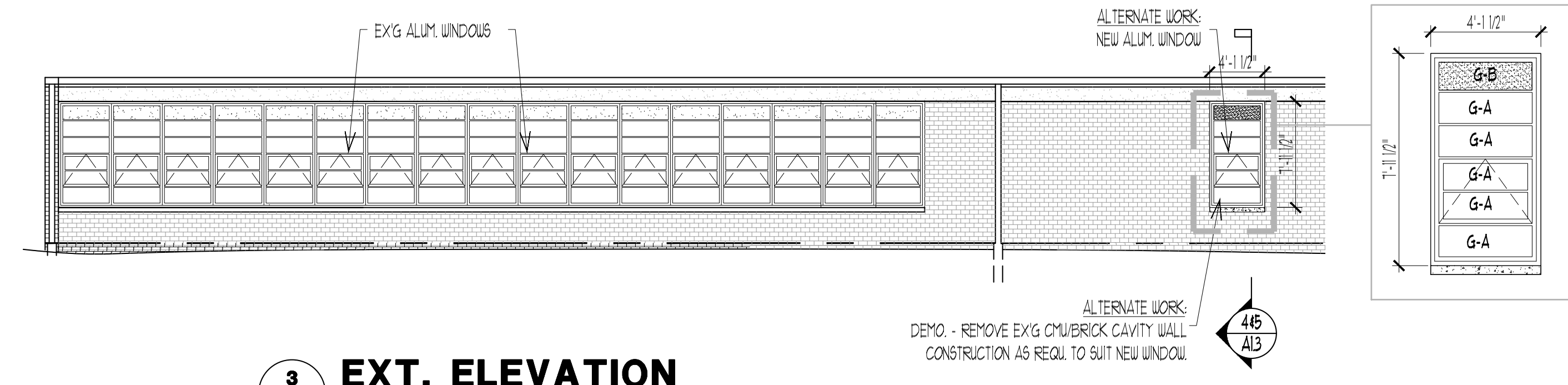
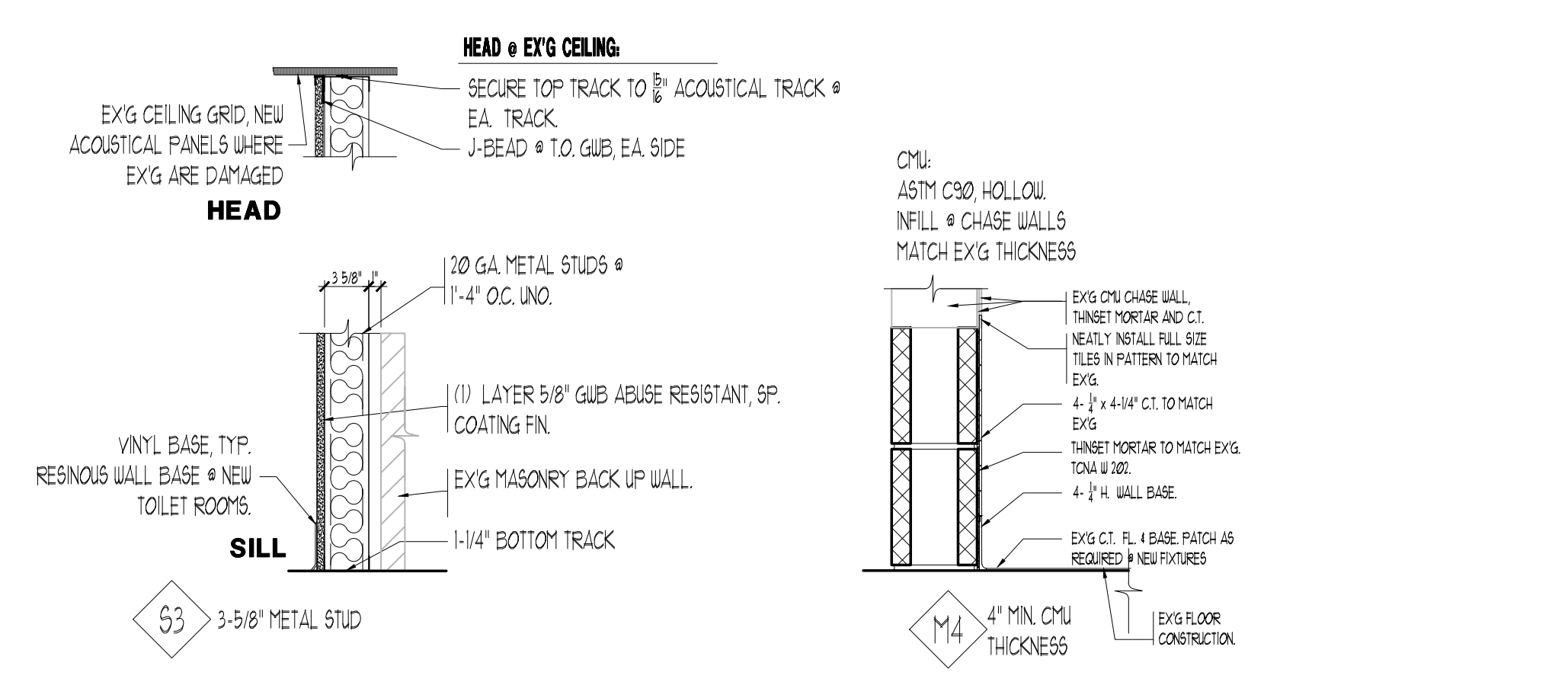
- ROOM FINISH SCHEDULE NOTES - SPECIFIC:**
- SP. COAT FN. ON NEW WALLS.
 - PROVIDE NEW VCT. 4 WALL BASE AT NEW 8NK LOCATION. PROVIDE TRANSITION STRIP TO MATCH EX'G ADJACENT CLASSROOMS.
 - PATCH EX'G VCT. AND WALL BASE AT EX'G 8NK LOCATIONS AND EX'G CASEWORK. 4 EQUIPMENT WALL.
 - PATCH EX'G CMU WALLS AND PATCH EX'G C.T. FINISH TO MATCH EX'G, INCLUDING WALL BASE.



WALL FINISHES

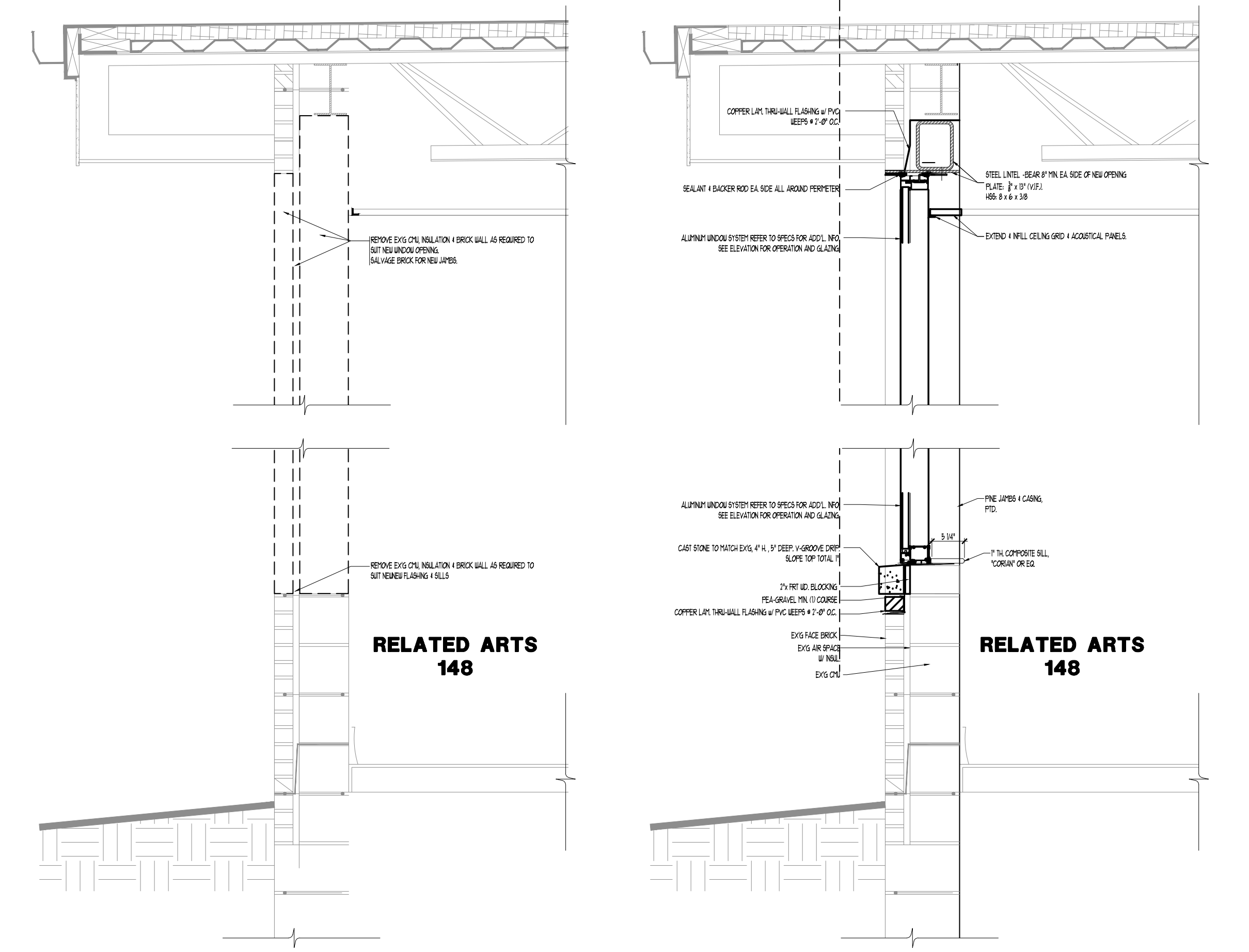
- a. SPECIAL COATING
- b. CERAMIC TILE OVER THINSET MORTAR TO MATCH EX'G.

WALL TYPES



3 EXT. ELEVATION ALTERNATE WINDOW
1/8"=1'-0"

6 NEW WORK JAMB DETAIL ALTERNATE WINDOW
3/4"=1'-0"



4 DEMO. WALL SECTION ALTERNATE WINDOW
3/4"=1'-0"

5 NEW WORK WALL SECTION ALTERNATE WINDOW
3/4"=1'-0"

| DATE | No. | REVISION |
|------|-----|----------|
| | | |
| | | |

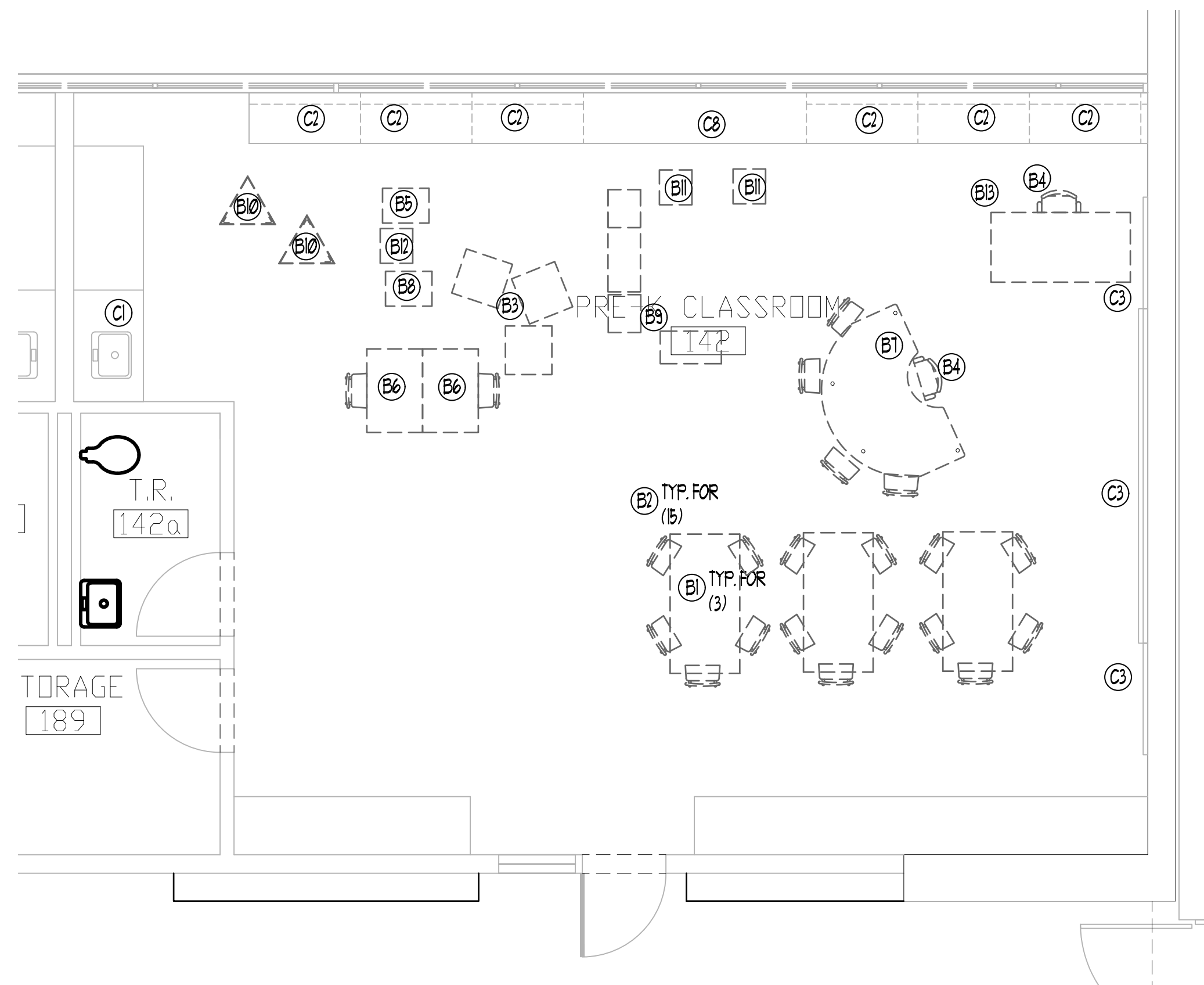
STATE PLAN NO. 05-1420-050-26-2000
 PRE-K RENOVATIONS - CLASSROOMS AND TOILET ROOMS
EVANS ELEMENTARY SCHOOL
 400 NJ-73, MARLTON, NJ 08053
 EYESHAM TOWNSHIP SCHOOL DISTRICT
 BURLINGTON COUNTY
 BLOCK 26
 LOT 4
 EYESHAM TOWNSHIP
 Linda W. Vinzell, AIA, Secretary/Treasurer
 Drew C. Dingler, AIA, President

KEY PLAN

THE DESIGN COLLABORATIVE
 ARCHITECTS AND PLANNERS, P.A.
 840 ROUTE 9 NORTH
 CAPE MAY COURT HOUSE, NEW JERSEY 0820
 PHONE: 609 465 4111 FAX: 609 465 9358
 WWW.DESIGNCOLLABORATIVE.COM

SCALE: AS NOTED DRAWN BY: **lv**
 COMM. No.: 8373 CHECKED BY: **dcd**
 DATE: 05-27-2026

SHEET TITLE:
PARTIAL PLAN - NEW WORK
 SHEET No.: **A13**



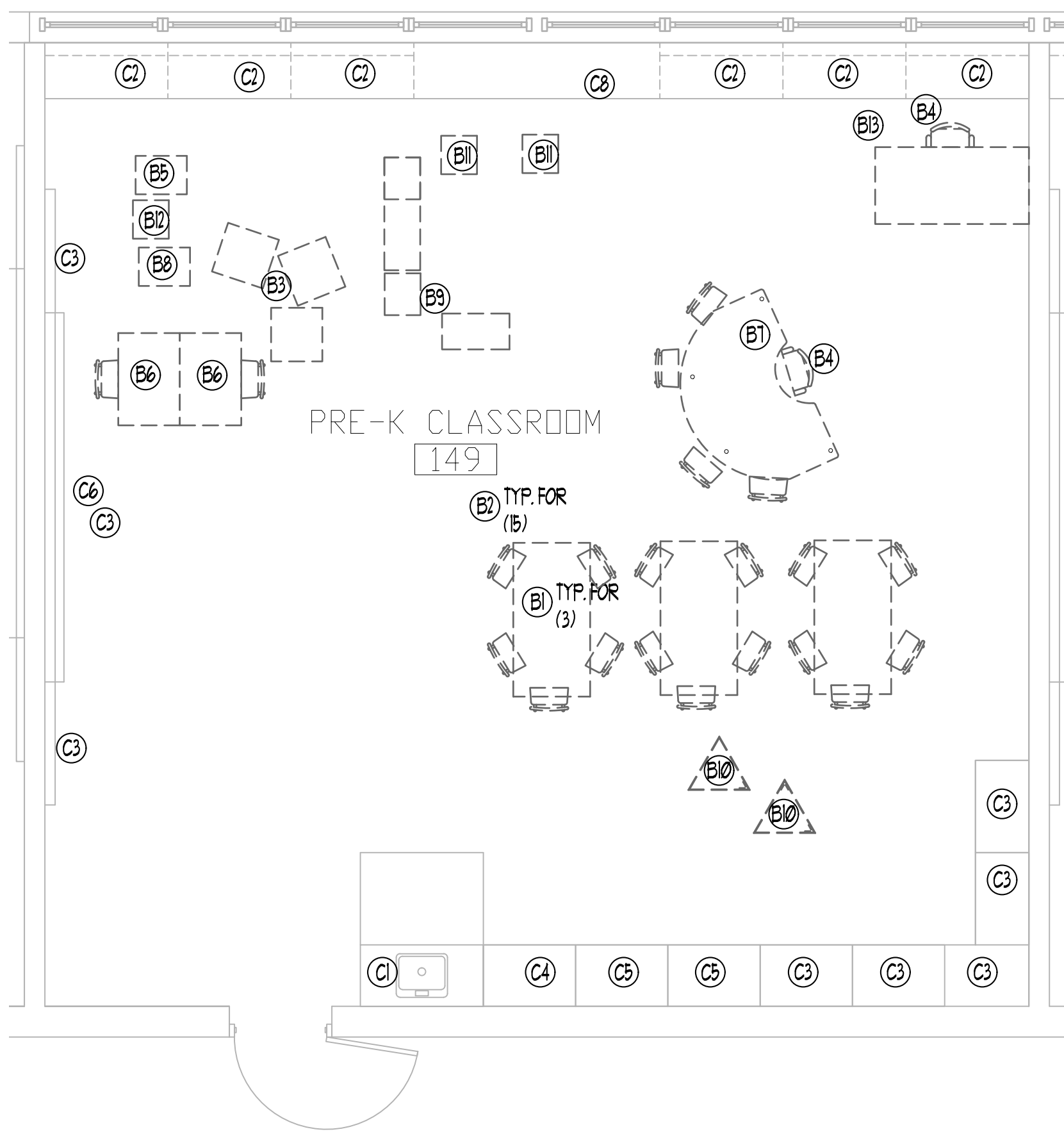
1 FURNISHINGS PLAN
A142 SHOWN. A141 OPP. HAND 1/4"=1'-0"

EVESHAM PRE-K CLRM. GRADE PK
 Evans School with Toilet Room RENOVIATION 2

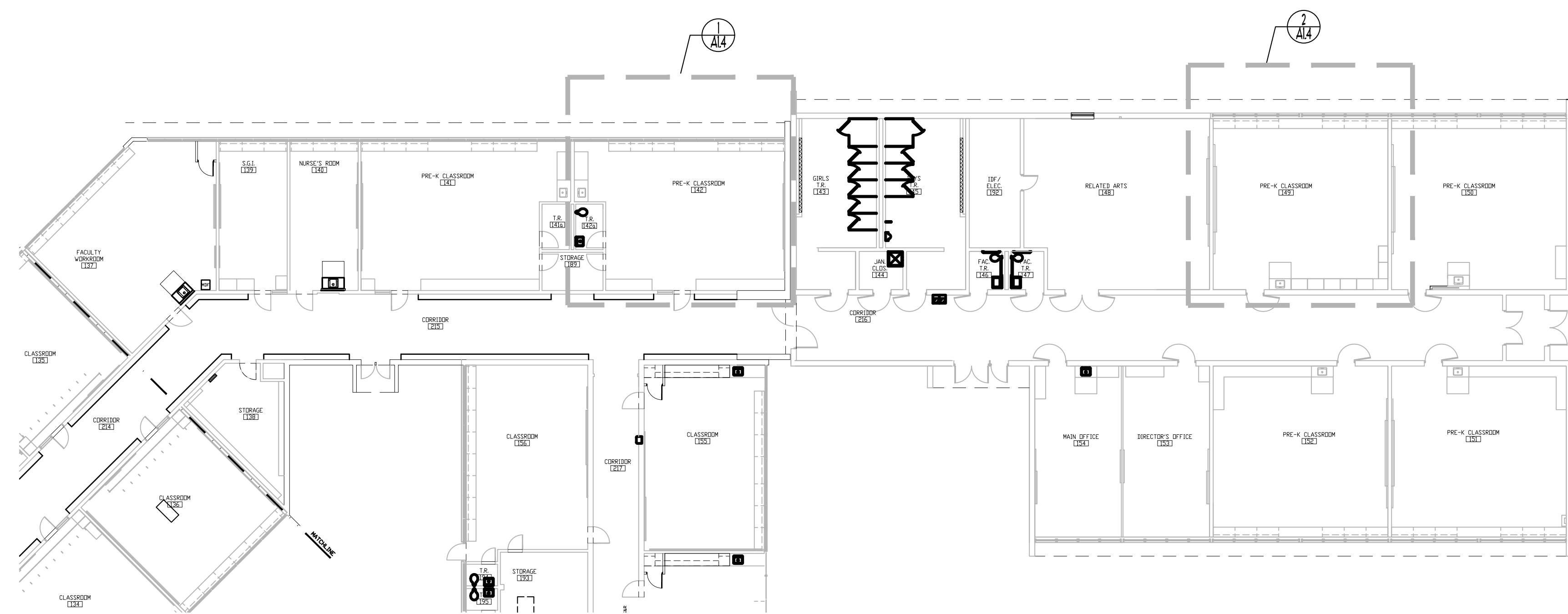
| PROGRAM AREA | QTY | SQ. FT. | TOTAL |
|---|---------|---------|-----------------|
| A. Occupants | | | 340 |
| 1 Teachers | 2 | 20 | 40 |
| 2 Students | 15 | 20 | 300 |
| B. Movable Furniture | | | 145 |
| 1 Student tables | 3 | 13 | 39 |
| 2 Student Chairs | 15 | 2 | 30 |
| 3 Soft furniture/cushions | 3 | 3 | 9 |
| 4 Teacher's chair | 2 | 3 | 6 |
| 5 Movable Storage Island | 1 | 5 | 5 |
| 6 Project tables w/ (1) chair each | 2 | 8 | 16 |
| 7 N/A | 0 | 0 | 0 |
| 8 Toy storage chest | 1 | 3 | 3 |
| 9 Home center props (2 @ 3 SF, 1 @ 6 SF= 12 SF total) | 1 | 12 | 12 |
| 10 3 sided easel | 2 | 3 | 6 |
| 11 Movable unit w/cubbies | 2 | 2 | 4 |
| 12 Big Book storage bin w/wasel | 1 | 2 | 2 |
| 13 Teacher's Desk | 1 | 13 | 13 |
| C. Fixed Casework and Equipment | | | 108 |
| 1 Sink w/ Storage Counter | 1 | 8 | 8 |
| 2 Perimeter Shelving | 6 | 7 | 42 |
| 3 Tall storage Cabinets | 4 | 7 | 28 |
| 4 Teacher storage Cabinet | 1 | 6 | 6 |
| 5 Student storage Cabinet | 2 | 6 | 12 |
| 6 Interactive white board | 1 | 0 | 0 |
| 7 Tackboard and dry marker board | Maximum | 0 | 0 |
| 8 Unit Ventilator | 1 | 12 | 12 |
| D. Support Space | | | 98 |
| 1 Individual Toilet Room | 1 | 57 | 58 |
| 2 Storage room | 1 | 40 | 40 |
| Minimum Total Area Required: | | | 691 S.F. |
| Minimum total area provided | | | 950 S.F. |

EVESHAM PRE-K CLRM. GRADE PK
 Evans School No T.R. RENOVIATION 4

| PROGRAM AREA | QTY | SQ. FT. | TOTAL |
|---|---------|---------|-------------------|
| A. Occupants | | | 340 |
| 1 Teachers | 2 | 20 | 40 |
| 2 Students | 15 | 20 | 300 |
| B. Movable Furniture | | | 145 |
| 1 Student tables | 3 | 13 | 39 |
| 2 Student Chairs | 15 | 2 | 30 |
| 3 Soft furniture/cushions | 3 | 3 | 9 |
| 4 Teacher's chair | 2 | 3 | 6 |
| 5 Movable Storage Island | 1 | 5 | 5 |
| 6 Project tables w/ (1) chair each | 2 | 8 | 16 |
| 7 N/A | 0 | 0 | 0 |
| 8 Toy storage chest | 1 | 3 | 3 |
| 9 Home center props (2 @ 3 SF, 1 @ 6 SF= 12 SF total) | 1 | 12 | 12 |
| 10 3 sided easel | 2 | 3 | 6 |
| 11 Movable unit w/cubbies | 2 | 2 | 4 |
| 12 Big Book storage bin w/wasel | 1 | 2 | 2 |
| 13 Teacher's Desk | 1 | 13 | 13 |
| C. Fixed Casework and Equipment | | | 110 |
| 1 Sink w/ Storage Counter | 1 | 8 | 8 |
| 2 Perimeter Shelving | 6 | 7 | 42 |
| 3 Tall storage Cabinets | 5 | 6 | 30 |
| 4 Teacher storage Cabinet | 1 | 6 | 6 |
| 5 Student storage Cabinet | 2 | 6 | 12 |
| 6 Interactive white board | 1 | 0 | 0 |
| 7 Tackboard and dry marker board | Maximum | 0 | 0 |
| 8 Unit Ventilator | 1 | 12 | 12 |
| D. Support Space | | | 0 |
| 1 N/A | 0 | 0 | 0 |
| Minimum Total Area Required: | | | 595 S.F. |
| Minimum total area provided | | | 1,002 S.F. |



2 FURNISHINGS PLAN
A148 & A149 SHOWN. 1/4"=1'-0"
SIM. TO 149: 150 & 152.
SIM TO 149: 151 OPP. HAND



A FURNISHINGS KEY PLAN 1/16"=1'-0"

WORK ON THIS SHEET IS BY THE DISTRICT AND IS SHOWN FOR INFORMATION PURPOSES.

DATE No. REVISION

LOT 4

STATE PLAN NO. 05-1420-050-26-2000
 PRE-K RENOVATIONS - CLASSROOMS AND TOILET ROOMS
EVANS ELEMENTARY SCHOOL
 400 NJ-73, MARLTON, NJ 08053
 EVESHAM TOWNSHIP SCHOOL DISTRICT

BLOCK 26
 EVESHAM TOWNSHIP
 BURLINGTON COUNTY

KEY PLAN

THE DESIGN COLLABORATIVE
 ARCHITECTS AND PLANNERS, P.A.
 840 ROUTE 9 NORTH
 CAPE MAY COURT HOUSE, NEW JERSEY 0820
 PHONE 609 465 4111 FAX 609 465 9358
 WWW.DCARCHITECT.COM

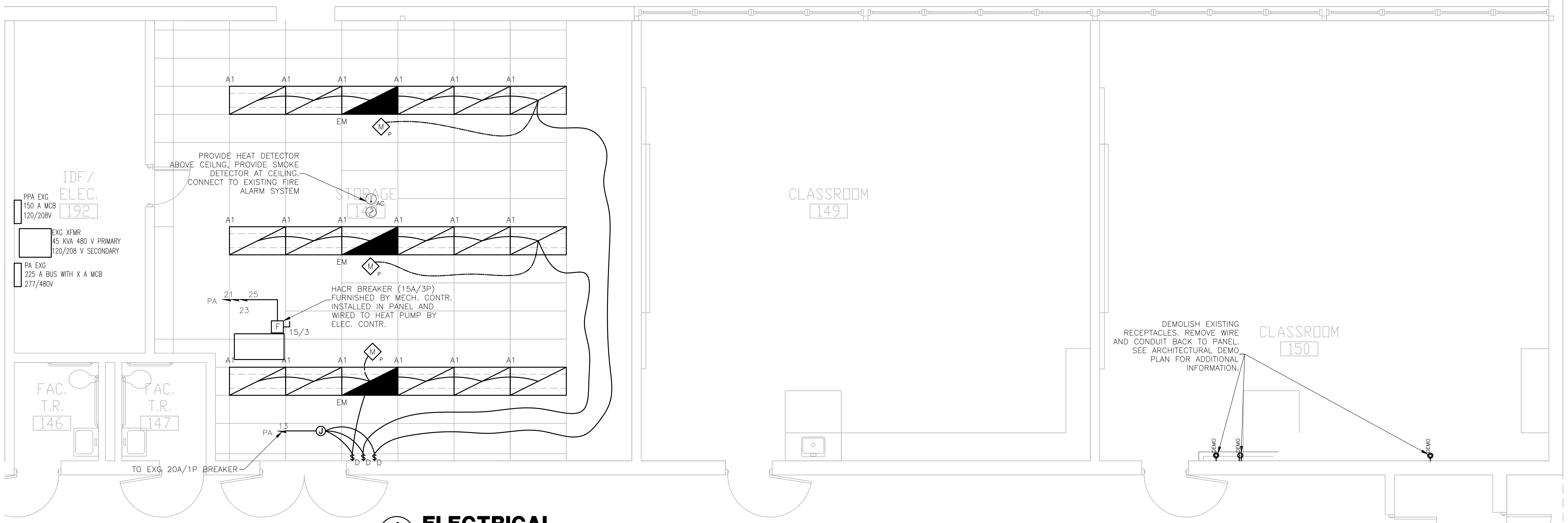
SCALE: AS NOTED DRAWN BY: **lv**
 COMM. No. 8373 CHECKED BY: **dcd**
 DATE: 05-27-2026

SHEET TITLE:
FURNISHINGS

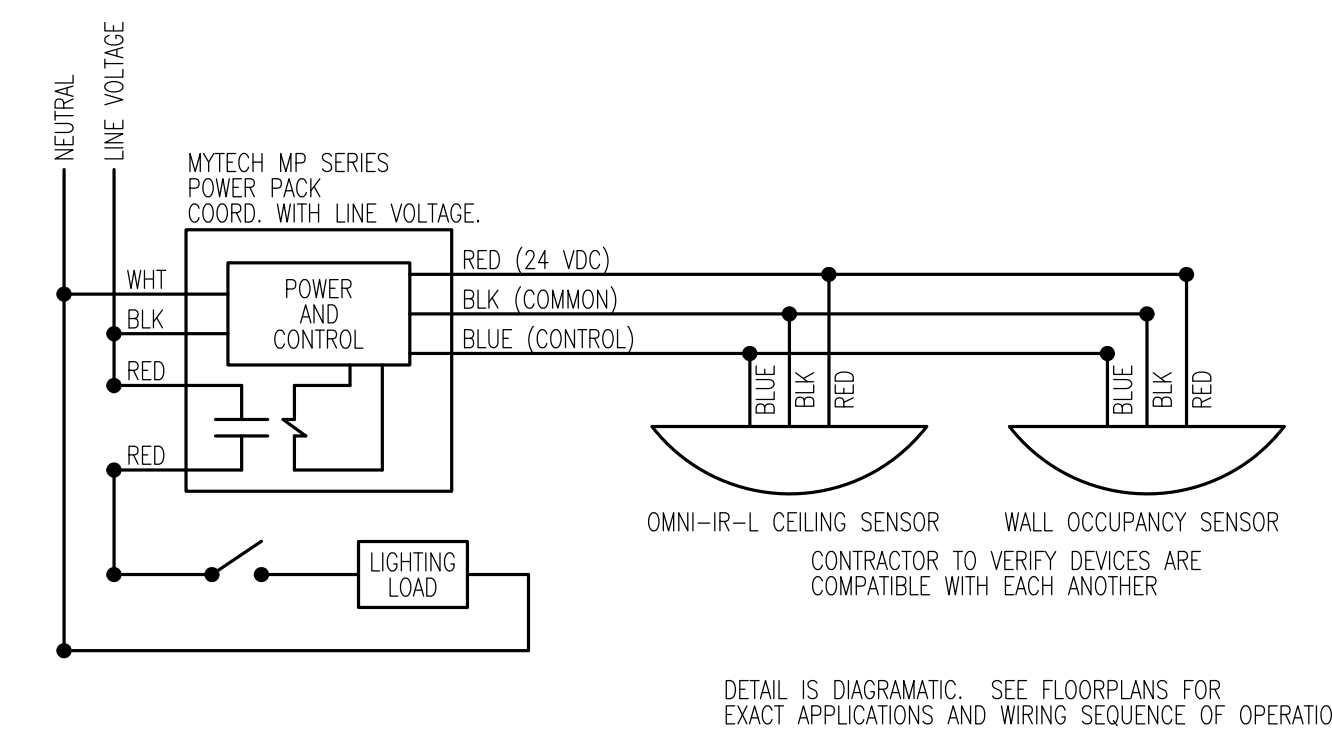
SHEET No.:
A14

ELECTRICAL SYMBOLS/ FIXTURE SCHEDULE

- NEW WALL-MOUNTED LIGHT FIXTURE
BASIS OF DESIGN: LSI INDUSTRIES
MODEL #: W442-LED-SS-WW-UE-EM
SPECIFICATIONS: NEW, WALL-MOUNTED LIGHTING FIXTURE, LED, 120-277 V AC, 29 W, 0.26 AMPS, 4,000K, 3,224 LUMENS, 111 LM/W EFFICACY, 80 CRI, WITH EMERGENCY BATTERY POWER PACK, MOUNT AT 7'-4" ABOVE FINISHED FLOOR.
NOTE: CONTRACTOR TO COORDINATE FINAL LIGHTING FIXTURES WITH OWNER PRIOR TO INSTALLATION. USE THIS LIGHTING FIXTURE, OR EQUIVALENT LIGHTING FIXTURE.
- EXISTING CEILING-RECESSED LIGHT FIXTURE
SPECIFICATIONS:
LITHONIA CPANEL 2x4 40/50/60LM @40LM 40K, CEILING-RECESSED TROFFER/ PANEL LIGHT.
EM INDICATES EMERGENCY LIGHTING BATTERY PACK
- LIGHT SWITCH: 'D' INDICATES 0-10V DIMMABLE SWITCH COMPATIBLE WITH LED FIXTURE
- DUPLEX RECEPTACLE
"42" = MOUNTING HEIGHT TO CENTER OF DEVICE FROM FINISHED FLOOR.
"GFCI" = GROUND FAULT CIRCUIT INTERRUPTER
"WP" = WEATHERPROOF IN-USE COVER
- OCCUPANCY SENSOR (WALL MOUNTED) 180 DEGREE COVERAGE.
- OCCUPANCY SENSOR (CEILING MOUNTED) "P" INDICATES MULTIPLE PARALLEL SWITCHES OR SERIES SWITCH. 360 DEGREE COVERAGE
- SMOKE DETECTOR - ADDRESSABLE, COMBINATION (EXG) INDICATES EXISTING TO REMAIN - SUBSCRIPT 'C' = CONVENTIONAL
- COMBINATION HORN/STROBE UNIT - WALL MOUNTED, SUBSCRIPT INDICATED CANDELA (NO SUBSCRIPT=15cd), WP FOR EXTERIOR LOCATIONS.
- ELECTRICAL PANEL
- JUNCTION BOX
- HANDSET/VOICE OUTLET - WALL MOUNTED AT 48" AFF UON. (WALL MOUNTED TELEPHONE ASSEMBLY)

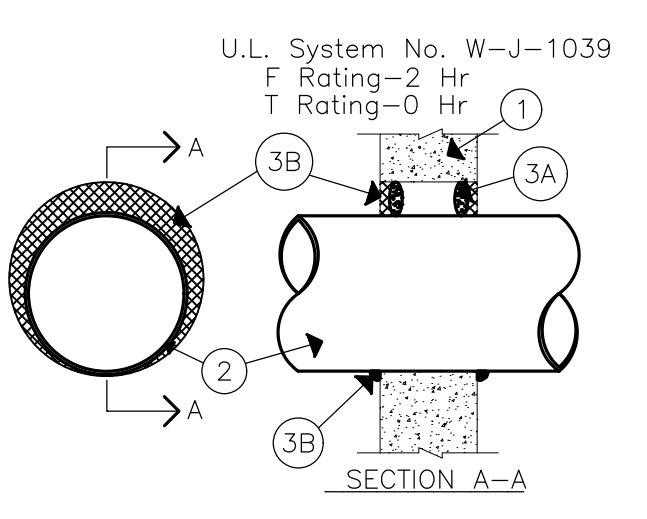


1 ELECTRICAL FLOOR PLAN 1/4"=1'-0"



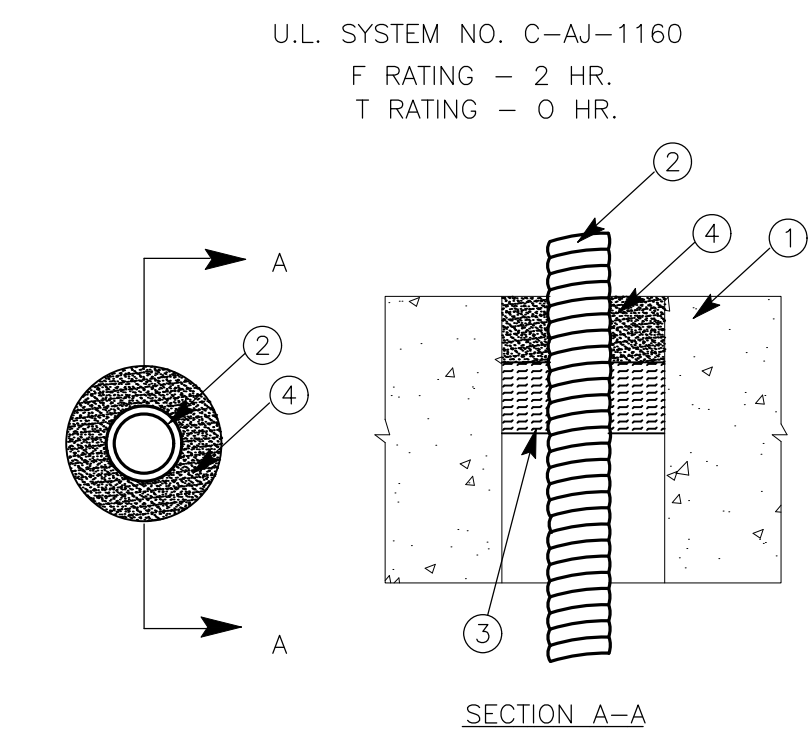
2 TYPICAL OCCUPANCY SENSOR WIRING DIAGRAM N.T.S.

- Wall Assembly- Refer to architectural plans for wall assembly type.
- Through Penetrants-One metallic pipe, conduit or tubing to be installed either concentrically or eccentrically within the firestop system. Pipe, conduit or tubing to be rigidly supported on both sides of wall assembly. The following types and sizes of metallic pipes, conduits or tubing may be used:
 - A. Steel Pipe-Nom 10 in. diam (or smaller) Schedule 20 (or heavier) steel pipe. The annular space shall be min 0 in. to max 1 in.
 - B. Iron Pipe-Nom 10 in. diam (or smaller) cast or ductile iron pipe. The annular space shall be min 0 in. to max 1 in.
 - C. Conduit-Nom 4 in. diam (or smaller) steel electrical metallic tubing or steel conduit. The annular space shall be min 0 in. to max 1 in.
 - D. Copper Tubing-Nom 2 in. diam (or smaller) type L (or heavier) copper tubing. The annular space shall be min 0 in. to max 1 in.
 - E. Copper Pipe-Nom 2 in. diam (or smaller) Regular (or heavier) copper pipe. The annular space shall be min 0 in. to max 1 in.
- Firestop System-The firestop system shall consist of the following:
 - A. Packing Material-Foam barker rod firmly packed into opening as a permanent form. Packing material to be recessed from both surfaces of wall as required to accommodate the required thickness of fill material.
 - B. Fill, Void or Cavity Material-Caulk-Min 1/2 in. thickness of fill material applied within the annulus. Flush with both surfaces of wall. At the point contact location between pipe and wall, a min 1/4 in. diam bead of fill material shall be applied at the wall/pipe interface on both surfaces of wall.

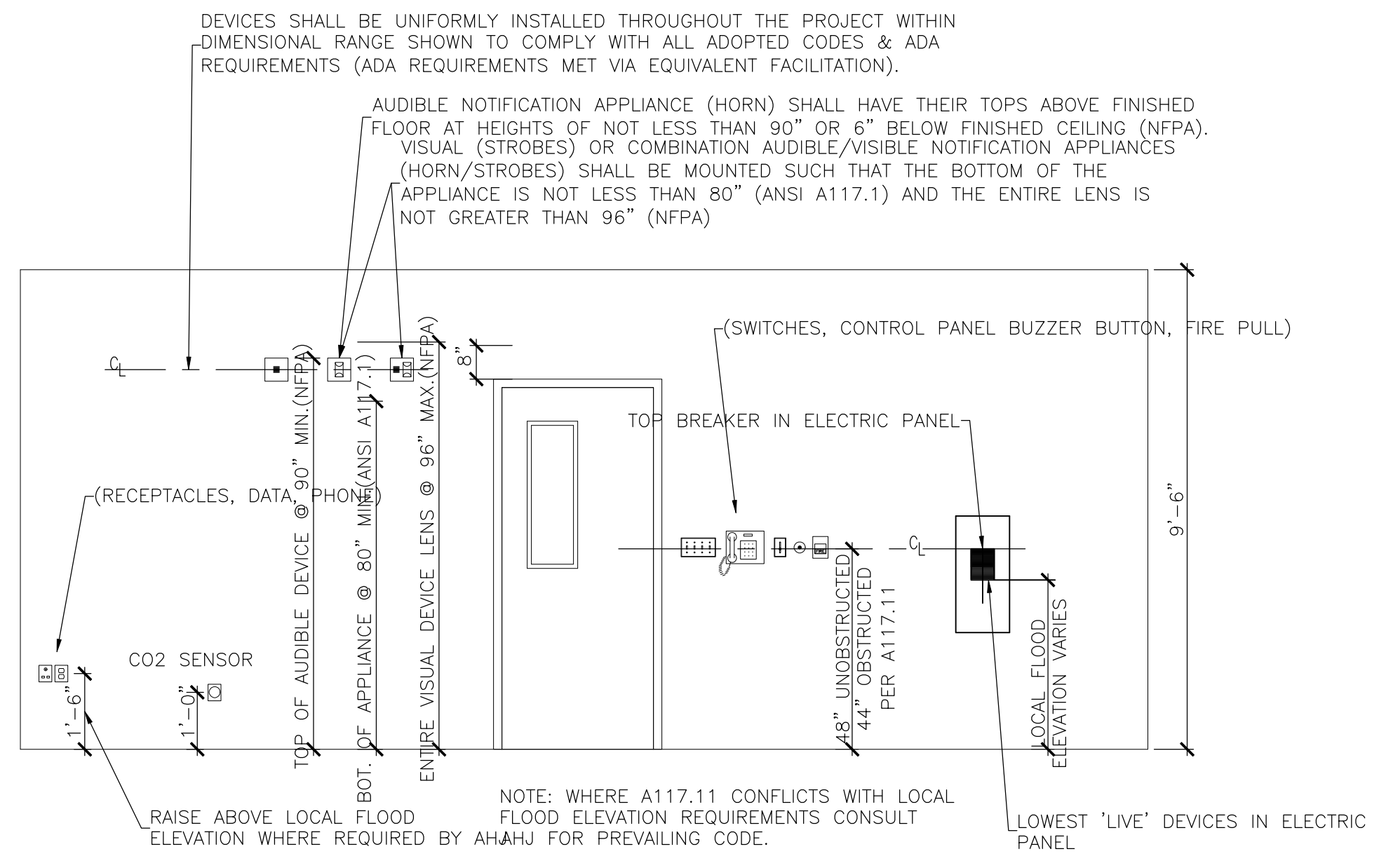


3 RATED ASSEMBLY PENETRATION DETAIL FOR NON-FLEXIBLE CONDUIT N.T.S.

- FLOOR OR WALL ASSEMBLY - REFER TO ARCHITECTURAL PLANS
- THROUGH PENETRATING PRODUCT - NOM 4 IN. DIAM (OR SMALLER) STEEL OR NOM. 3/4 IN. DIAM. (OR SMALLER) ALUMINUM FLEXIBLE METAL CONDUIT+. MAX ONE FLEXIBLE METAL CONDUIT TO BE INSTALLED NEAR CENTER OF CIRCULAR THROUGH OPENING IN FLOOR OR WALL ASSEMBLY. FLEXIBLE METAL CONDUIT TO BE RIGIDLY SUPPORTED ON BOTH SIDES OF FLOOR OR WALL ASSEMBLY.
- PACKING MATERIAL - NOM. 1 IN. THICKNESS OF CERAMIC (ALUMINA SILICA) FIBER BLANKET OR MINERAL WOOL BATT INSULATION FIRMLY PACKED INTO OPENING AS A PERMANENT FORM. PACKING MATERIAL TO BE RECESSED MIN 1 IN. FROM TOP SURFACE OF FLOOR OR FORM BOTH SURFACES OF WALL.
- FILL, VOID OR CAVITY MATERIAL - CAULK - APPLIED TO FILL THE ANNULAR SPACE AROUND THE FLEXIBLE METAL CONDUIT. IN FLOORS, A MIN. 1 IN. DEPTH OF FILL MATERIAL TO BE INSTALLED FLUSH WITH TOP SURFACE OF FLOOR. IN WALLS, A MIN. 1 IN. DEPTH OF FILL MATERIAL TO BE INSTALLED FLUSH WITH WALL SURFACE ON BOTH SIDES OF WALL ASSEMBLY.



4 RATED ASSEMBLY PENETRATION DETAIL FOR TYPE 'NM' CABLE N.T.S.



5 DIAGRAMMATIC TYPICAL ELEVATION FOR ELECTRICAL SYSTEM DEVICES N.T.S.

- DEVICES SHALL BE UNIFORMLY INSTALLED THROUGHOUT THE PROJECT WITHIN DIMENSIONAL RANGE SHOWN TO COMPLY WITH ALL ADOPTED CODES & ADA REQUIREMENTS (ADA REQUIREMENTS MET VIA EQUIVALENT FACILITATION).
- AUDIBLE NOTIFICATION APPLIANCE (HORN) SHALL HAVE THEIR TOPS ABOVE FINISHED FLOOR AT HEIGHTS OF NOT LESS THAN 90" OR 6" BELOW FINISHED CEILING (NFPA). VISUAL (STROBES) OR COMBINATION AUDIBLE/VISIBLE NOTIFICATION APPLIANCES (HORN/STROBES) SHALL BE MOUNTED SUCH THAT THE BOTTOM OF THE APPLIANCE IS NOT LESS THAN 80" (ANSI A117.1) AND THE ENTIRE LENS IS NOT GREATER THAN 96" (NFPA).
- NOTE: WHERE A117.1.1 CONFLICTS WITH LOCAL FLOOD ELEVATION REQUIREMENTS CONSULT AHAHJ FOR PREVAILING CODE.
- COORDINATE LOCATION OF DEVICES WITH ALL OTHER TRADES AND BUILDING OBSTACLES.

ELECTRICAL WIRING APPLICATION SCHEDULE

- APPLICABLE TO ALL PLANS AS REQUIRED
- INDOOR WIRING METHODS:
- BRANCH CIRCUITS CONCEALED BY REMOVABLE DROP CEILING: MC CABLE.
 - BRANCH CIRCUITS EXPOSED IN FINISHED SPACES: THHN/THWN CONDUCTORS IN METALLIC SURFACE RACEWAY (ONLY IF APPROVED BY OWNER).
 - BRANCH CIRCUITS EXPOSED IN UNFINISHED SPACES: THHN/THWN CONDUCTORS IN EMT CONDUIT.
 - BRANCH CIRCUITS CONCEALED BY CONCRETE SLAB: THHN/THWN CONDUCTORS IN SCH. 40 PVC CONDUIT.
 - BRANCH CIRCUITS CONCEALED BY PERMANENT WALLS/CEILING: MC CABLE.
 - FIRE ALARM CIRCUITS CONCEALED BY REMOVABLE DROP CEILING: FPLP CABLE.
 - FIRE ALARM CIRCUITS EXPOSED IN FINISHED SPACES: FPLP CABLE IN METALLIC SURFACE RACEWAY.
 - FIRE ALARM CIRCUITS EXPOSED IN UNFINISHED SPACES: FPLP CABLE IN EMT CONDUIT.
 - FIRE ALARM CIRCUITS CONCEALED BY CONCRETE SLAB: FPLP CABLE IN SCH. 40 CONDUIT.
 - FIRE ALARM CIRCUITS CONCEALED BY PERMANENT WALLS/CEILING: FPLP CABLE.
- OUTDOOR WIRING METHODS:
- BRANCH CIRCUITS UNDERGROUND: THHN/THWN CONDUCTORS IN SCH. 40 PVC CONDUIT.
 - BRANCH CIRCUITS ABOVE-GROUND: THHN/THWN CONDUCTORS IN GALV. RIGID STEEL OR SCH. 80 PVC CONDUIT WITH EXPANSION JOINTS AS NECESSARY.

GENERAL ELECTRICAL DEMOLITION NOTES

- APPLICABLE TO ALL PLANS AS REQUIRED
- REMOVE MECHANICAL EQUIPMENT FEEDER, STARTER, DISCONNECT WIRE AND CONDUIT FROM UNIT BACK TO SOURCE IN PANELBOARD. RE-LABEL BREAKER AS "SPARE" IF BREAKER IS NOT USED IN NEW WORK.
 - REMOVE FIXTURES, DEVICES, BOXES, WIRING, AND CONDUIT FROM WALL WHICH IS TO BE DEMOLISHED. REMOVE CONDUIT AND WIRING BACK TO NEAREST JUNCTION BOX. RECONNECT CIRCUITRY TO MAINTAIN OPERATION OF REMAINDER OF CIRCUITS.
 - E.C. SHALL EXTEND EXISTING WIRING AND/OR PROVIDE NEW WIRING AS REQUIRED TO RELOCATE ANY DEVICE INDICATED ON PLANS.
 - EXISTING EQUIPMENT/DEVICE FOUND TO BE REUSABLE MAY BE REUSED/RELOCATED. ALL OTHER MATERIAL SHALL BE REMOVED FROM THE JOB SITE UNLESS OTHERWISE DIRECTED BY THE DESIGN ENGINEER. PROVIDE NEW EQUIPMENT/DEVICE IF EXISTING IS NOT OPERATIONAL. EXTEND EXISTING WIRING TO NEW EQUIPMENT/DEVICE LOCATION, PROVIDE ADDITIONAL WIRING, CONDUIT, BOXES ETC. IT IS NECESSARY AND REQUIRED FOR THE CONTRACTOR TO RESTORE ALL CIRCUITRY FUNCTIONALITY.
 - PARTIAL BRANCH CIRCUIT WIRING DENOTING EXISTING CONTROL OR SWITCHING ON THE DRAWING IS SHOWN FOR REFERENCE ONLY, AND IS NOT TO BE CONSTRUED TO IMPLY COMPLETE CIRCUIT WIRING. THE LOCATION OF THE INTERCONNECTION OF CONTROL DEVICE, AND EQUIPMENT CONTROLLED IS DIAGRAMMATIC ONLY.
- GENERAL NOTES:
- EQUIPMENT/DEVICE TO BE RELOCATED IS SHOWN AS DASHED (EQUIPMENT/DEVICE TO BE REUSED/REMAIN IS SHOWN AS SOLID).
 - PROVIDE NEW HOMERUNS AND/OR CIRCUIT WIRING FOR ALL CIRCUITS THAT WILL ACCOMMODATE NEW DEVICES, CONTAINS RELOCATED DEVICES, OR HAVE HAD DEVICES REMOVED TO FIRST UNDISTURBED EXISTING DEVICE. THIS ENSURES THAT ALL NEW DEVICES WILL WORK WITHOUT INTERRUPTING THE EXISTING DEVICES.
 - UNLESS OTHERWISE NOTED, AND IF NOT IMPACTED BY GENERAL DEMOLITION OR NEW WORK, EXISTING ELECTRICAL DEVICES SHALL REMAIN COMPLETELY OPERATIONAL WITH EXCEPTION TO SCHEDULE SYSTEM OUTAGES. ALL SYSTEM OUTAGES SHALL BE COORDINATED WITH THE OWNER'S SCHEDULE NO LESS THAN SEVEN (7) DAYS IN ADVANCE.

ELECTRICAL GENERAL NOTES

- APPLICABLE TO ALL PLANS AS REQUIRED
- CONTRACTOR SHALL PROVIDE GFCI PROTECTION WHERE REQUIRED BY NEC.
 - CONTRACTOR RESPONSIBLE TO UPDATE AND PROVIDE OWNER WITH LATEST PANEL SCHEDULE FOR REVIEW.
 - ALL WIRING SHALL BE THHN / THWN. WIRING SHALL BE INSTALLED IN SURFACE RACEWAY, EMT CONDUIT OR MC CABLE. REFER TO WIRING APPLICATION SCHEDULE.
 - CONTRACTOR IS RESPONSIBLE FOR ALL RACEWAYS FOR POWER, DATA/VOICE AND OTHER ELECTRONIC SYSTEMS REGARDLESS OF WHO IS UNDER CONTRACT FOR THE WIRING & DEVICE INSTALLATION. COORDINATE REQUIREMENTS WITH OWNER PRIOR TO SUBMITTING PERMIT JACKET AND STARTING WORK.
 - CONTRACTOR TO PROVIDE RACEWAY PENETRATION AND FIRE SAFING FOR ALL ELECTRICAL/ELECTRONIC SYSTEMS PENETRATING RATED PARTITIONS.
 - ALL SURFACE MOUNTED DEVICES AND ASSOCIATED RACEWAY SHALL BE REVIEWED AND APPROVED BY OWNER PRIOR TO INSTALLATION.
 - CONTRACTOR SHALL COORDINATE HIS WORK WITH THE WORK OF ALL OTHER TRADES, MATERIALS, AND FIELD CONDITIONS AS REQUIRED.
 - CONTRACTOR SHALL COORDINATE LIGHT FIXTURES WITH ARCHITECTURAL CEILING PLANS. CONTRACTOR SHALL FIELD LOCATE AND COORDINATE DISCONNECT SWITCH LOCATIONS WITH MECHANICAL AND PLUMBING EQUIPMENT, AS REQUIRED. CONTRACTOR SHALL COORDINATE PLACEMENT OF ALL DEVICES/ RACEWAY WITH ARCHITECTS' CASEWORK, FURNITURE AND ALL OTHER CONTRACTORS ON SITE.
 - DRAWINGS ARE DIAGRAMMATIC, EXACT LOCATION OF EQUIPMENT, WIRING AND DEVICES SHALL BE DETERMINED BY THE CONTRACTOR SUBJECT TO THE ARCHITECT'S APPROVAL. DO NOT SCALE DRAWINGS FOR EXACT DIMENSIONS. VERIFY ALL FIGURES, CONDITIONS, AND DIMENSIONS AT THE JOB SITE.
 - COORDINATE PLACEMENT OF RECEPTACLES WITH CASEWORK, FURNITURE AND/OR SINKS.
 - ALL 125 VOLT SINGLE PHASE, 15 AND 20 AMP RECEPTACLES, WHEN INSTALLED WITHIN SIX FOOT RADIUS OF SINKS SHALL HAVE GROUND FAULT CIRCUIT INTERRUPTER PROTECTION.
 - CONTRACTOR SHALL BE RESPONSIBLE FOR VERIFYING THE ELECTRICAL CHARACTERISTICS OF ALL EQUIPMENT, MOTORS, ETC. BEFORE INSTALLING CABLING AND RACEWAY. IF THERE ARE ANY DISCREPANCIES BETWEEN THE ACTUAL RATING AND THE DRAWINGS, THE ARCHITECT SHALL BE NOTIFIED.
 - CONTRACTOR SHALL UTILIZE ABOVE CEILING AREA AND ALL NEW CONSTRUCTION WALLS AND / OR FLOORS FOR ALL RACEWAYS AND WIRING WHEREVER POSSIBLE. OTHERWISE, PROVIDE SURFACE MOUNTED RACEWAY TO CONCEAL WIRING.
 - ALL WORK SHALL BE PERFORMED AND STRICTLY COMPLY WITH THE LATEST EDITION OF THE NATIONAL ELECTRICAL CODE (NEC), NFPA 72, ADA, SCHEDULES/SPECIFICATIONS, ALL LOCAL CODES AND ALL OTHER REGULATIONS GOVERNING WORK OF THIS NATURE, AND THE LOCAL AUTHORITY HAVING JURISDICTION.
 - THE CONTRACTOR IS RESPONSIBLE FOR ALL WORK, MATERIALS, AND LABOR TO SATISFY A COMPLETE WORKING SYSTEM WHETHER SPECIFIED OR IMPLIED.
 - THE CONTRACTOR SHALL, BEFORE SUBMITTING ANY PROPOSAL, EXAMINE THE PROPOSED SITE AND SHALL DETERMINE FOR HIMSELF THE CONDITIONS THAT MAY EFFECT THE WORK. NO ALLOWANCE SHALL BE MADE IF THE CONTRACTOR FAILS TO MAKE SUCH EXAMINATIONS.
 - THE CONTRACTOR SHALL SECURE ALL PERMITS OR APPLICATIONS AND PAY ANY AND ALL FEES.
 - MATERIALS, EQUIPMENT AND INSTALLATION SHALL BE GUARANTEED FOR A PERIOD OF ONE (1) YEAR FROM DATE OF ACCEPTANCE. DEFECTS WHICH APPEAR DURING THAT PERIOD SHALL BE CORRECTED AT THIS CONTRACTOR'S EXPENSE.
 - FOR THE SAME PERIOD, THE ELECTRICAL CONTRACTOR SHALL BE RESPONSIBLE FOR ANY DAMAGE TO PREMISES CAUSED BY DEFECTS IN WORKMANSHIP OR IN THE WORK OR EQUIPMENT FURNISHED AND/OR INSTALLED BY HIM.
 - AFCI PROTECTION IS REQUIRED ON ALL BRANCH CIRCUITS SURPASSING OUTLETS OR DEVICES INSTALLED IN DWELLING UNIT KITCHENS, FAMILY ROOMS, DINING ROOMS, LIVING ROOMS, PARLORS, LIBRARIES, DENS, BEDROOMS, SUNROOMS, RECREATION ROOMS, CLOSETS, HALLWAYS, AND SIMILAR ROOMS AND AREAS.
 - ALL 125 VOLT, SINGLE-PHASE, 15 AND 20 AMP RECEPTACLES, WHEN INSTALLED WITHIN RESIDENTIAL SPACES SHALL BE TAMPER RESISTANT.
 - FIRE ALARM SYSTEM SHALL BE COMPLETELY INSPECTED BY LOCAL AUTHORITY HAVING JURISDICTION & A FUNCTIONAL TEST BY THE MANUFACTURER'S REPRESENTATIVE. BATTERY BACKUP WILL BE REQUIRED TO OPERATE A MINIMUM OF 24 HOURS IN THE NORMAL CONDITION & THEN 5 MINUTES IN THE ALARM CONDITION.
 - ALL FIRE ALARM WORK SHALL BE COORDINATED WITH FIRE ALARM PLANS AND MANUFACTURER'S INSTALLATION REQUIREMENTS.
 - ALL MECHANICAL CONTROL WIRING IS BY MECHANICAL CONTRACTOR.
 - ALL CIRCUIT BREAKERS SERVING MECHANICAL EQUIPMENT SHALL BE U.L. LISTED AS "HACR".
 - IN EDUCATIONAL OCCUPANCIES, ALL COMPUTER RECEPTACLES ARE TO BE ISOLATED GROUND (IG) AND HAVE TRANSIENT VOLTAGE SURGE SUPPRESSION (TVSS) RATING.

| | |
|---------|------------------|
| 5/27/26 | RELEASED FOR BID |
| DATE | No. REVISION |

SCHAFER KIENINGER ENGINEERING GROUP
 813 Route 9 South Cape May Court House, NJ 08210
 8 Todd Koeniger, Professional Engineer Lic# 3240333

LOT 4

EVANS ELEMENTARY SCHOOL
 400 NJ-78, MARLTON, NJ 08053
 EVESHAM TOWNSHIP SCHOOL DISTRICT

BURLINGTON COUNTY

LOT 4

SCHEMATIC AND FINAL SUBMISSION - STATE PLAN NO. 05-1420-01-1-26-XXXX

PROJECT APPLICATION

EVESHAM TOWNSHIP

DR. JOHN SMITH

DAVID PRESIDENT, DR. JAMES LUTHEIM

Dr. C. Dwyer, AIA, President
 New Jersey License # 2100000000

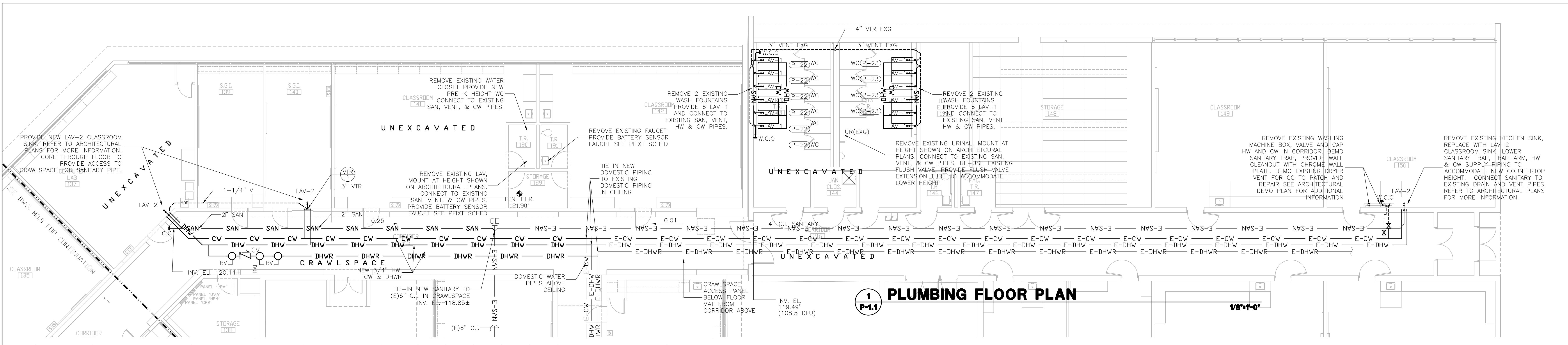
Dr. M. Vitelli, AIA, Secretary/Treasurer
 New Jersey License # 2100000000

THE DESIGN COLLABORATIVE
 ARCHITECTS AND PLANNERS, P.A.
 1500 ROUTE 9 NORTH
 CAPE MAY COURT HOUSE, NEW JERSEY 08210
 PHONE: 609 465 4411
 WWW.TDCARCHITECT.COM

SCALE: AS NOTED DRAWN BY: RYK
 COMM. No. 8372 CHECKED BY: RYK
 DATE: 05-05-2026

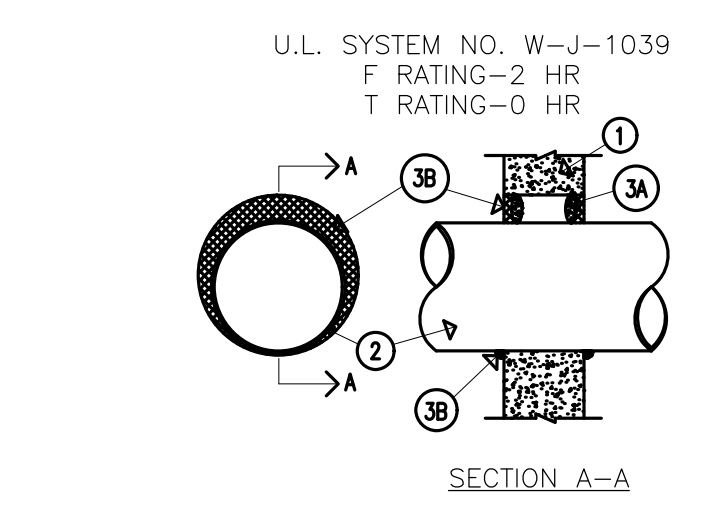
SHEET TITLE: ELECTRICAL PLAN

SHEET No.: E-11



1 PLUMBING FLOOR PLAN

| PLUMBING FIXTURE SCHEDULE | | | | | | | | | | | | | |
|---------------------------|---|-------------------|-------------|--|-----------------|--|--|-----------------|-------------|-----|--------|--------|---|
| TAG | DESCRIPTION | MANUFACTURER | MODEL | ACCESSORIES | SUPPLY FITTING | SUPPLY PIPE(S) | DRAIN | TRAP | CONNECTIONS | | | NOTES | |
| | | | | | | | | | CW | HW | WASTE | VENT | |
| (LAV-1) | LUCERNE WALL-HUNG LAVATORY | AMERICAN STANDARD | 0355-012 | FAUCET INSBRUCK, CAST CENTERSET, 1.0 GPM PRESSURE COMPENSATING, AMERICAN STANDARD MODEL # 6055205-002 WITH THERMOSTATIC MIXING VALVE, BATTERY POWERED SENSOR OPERATED, GRID DRAIN STRAINER, GRID DRAIN W/ OVERFLOW FOR SINKS, CHROME, AMERICAN STANDARD MODEL # 2411-015 | BALL VALVE STOP | COPPER W/ INTEGRATED CHECK AND THERMOSTATIC MIXING VALVE | GRID DRAIN STRAINER (SEE ACCESSORIES) | 1 1/4" P. TRAP | 12" | 12" | 1 1/4" | 1 1/2" | WHITE VITREOUS CHINA, WALL-HUNG, FRONT OVERFLOW, D-DHWR BOWL, SELF-DRAINING, REAR AREA W/ BACK AND SIDE SLASH SHIELDS, FAUCET HOLES ON 4" CENTERS, PROVIDE TRAP SHUTOFF VALVES, SUPPLY LINES, GRID DRAIN STRAINER, CONCEALED ARMS, AND PIPE COVER. (LAV) SHALL BE MOUNTED AT 26" A.F.F. |
| (LAV-2) | SINGLE BOWL, DROP-IN CLASSROOM ADA SINK AND W/ LEFT AND RIGHT FAUCET DECKS, BUBBLER KIT | ELKAY | DRKAD222065 | FAUCET: MODEL LK02439C, 3 HOLE, DUAL LEVER ON/OFF CONTROL, PROVIDE SEPARATE THERMOSTATIC MIXING VALVE TO PRE-MIX HOT TO 105 DEG F (40) WITH GOODSENSE FAUCET BUBBLER MODEL LK1141A WITH SPRING LOADED PUSH ON SPRING OFF | BALL VALVE STOP | COPPER W/ INTEGRATED CHECK AND THERMOSTATIC MIXING VALVE | 3-1/2" DRAIN FITTING, STAINLESS STEEL WITH STRAINER BASKET MODEL LKJ35 | 1 1/4" P. TRAP | 12" | 12" | 1 1/4" | 1 1/2" | SINGLE BOWL SINK MANUFACTURED FROM 18 GAUGE 304 STAINLESS STEEL WITH BRUSHED SATIN FINISH, REAR CENTER DRAIN PLACEMENT, BOTTOM ONLY SOUND DEADENING PADS, SINK DIMENSIONS: 22X18-1/2X16-1/2, BOWL DIMENSIONS: 13-1/2X19-1/2X8-3/8" |
| (WC) | CAST IRON WALL CLEANOUT, INTERNAL PVC CLEANOUT PLUG, POLISHED STAINLESS STEEL, SECURED WALL PLATE | WATTS | CO-444-RD | | | | | | | | | 4" | 7" ROUND 2-PIECE EXPANDABLE WALL CLEANOUT WITH STAINLESS STEEL COVER AND 4" OUTLET |
| (WC) | BABY DEVDORO TOILET | AMERICAN STANDARD | 2282-001 | SEAT: WHITE, OPEN FRONT, LESS COVER, AMERICAN STANDARD MODEL #50916005 | | | | INTEGRAL S-TRAP | | | | 2" | WHITE VITREOUS CHINA, FLOOR MOUNTED, 16-1/4" HEIGHT, FLUSH VALVE, TOP SPRING, ELONGATED BOWL, SIPHON-JET ACTION, 1.28 GPF |
| (F.V.) | NEW ULTRAM MANUAL TOILET FLUSH VALVE | AMERICAN STANDARD | 6047161-002 | | BALL VALVE STOP | COPPER | | | | | | 1" | MANUAL, NO SENSOR, TOP SPRING, 1.28 GPF, PISTON-TYPE, 25 PSI (FLOWING) - 80 PSI (STATIC) OPERATING PRESSURE, 25 GPM WATER FLOW RATE LEFT-HAND INSTALLATION, W/ 1" IPS, ANGLE STOP WITH BACK-FLOW PREVENTION AND VANDAL-RESISTANT CAP |

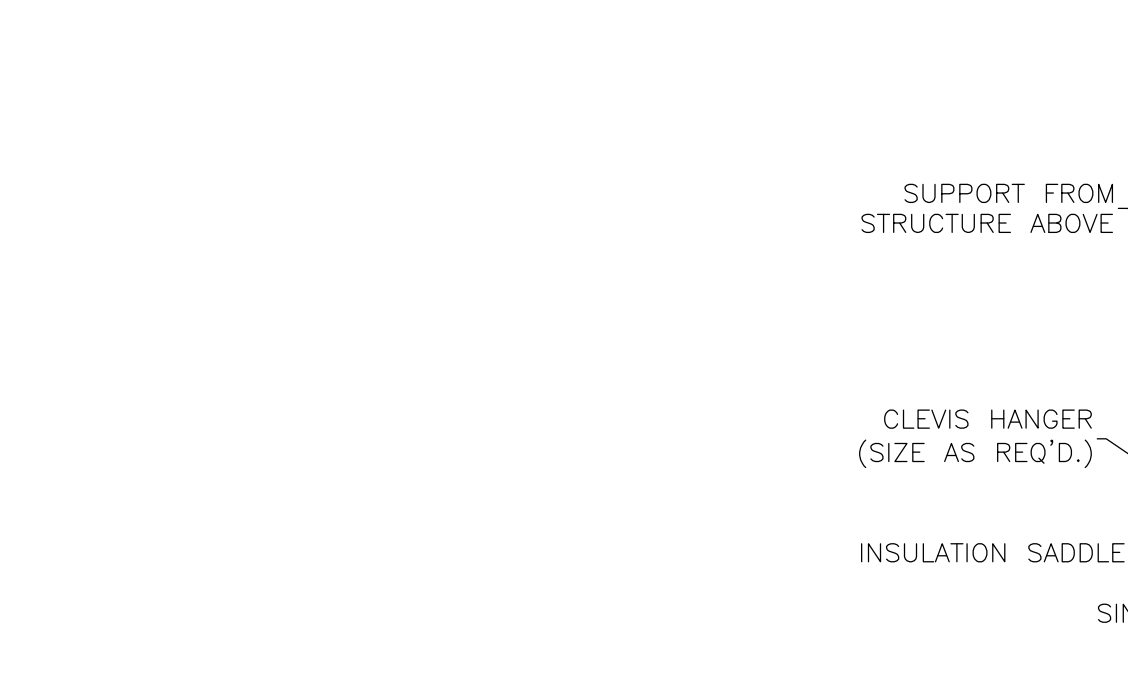


1. RATED WALL ASSEMBLY
2. THROUGH PENETRANTS—ONE METALLIC PIPE, CONDUIT OR TUBING TO BE INSTALLED EITHER CONCENTRICALLY OR ECCENTRICALLY WITHIN THE FIRESTOP SYSTEM. PIPE, CONDUIT OR TUBING TO BE RIGIDLY SUPPORTED ON BOTH SIDES OR WALL ASSEMBLY. THE FOLLOWING TYPES AND SIZES OF METALLIC PIPES, CONDUITS OR TUBING MAY BE USED:
- A. STEEL PIPE—NOM. 10 IN. DIAM. (OR SMALLER) SCHEDULE 20 (OR HEAVIER) STEEL PIPE. THE ANNUAL SPACE SHALL BE MIN. 0 IN. TO MAX. 1 IN.
 - B. IRON PIPE—NOM. 10 IN. DIAM. (OR SMALLER) CAST OR DUCTILE IRON PIPE. THE ANNUAL SPACE SHALL BE MIN. 0 IN. TO MAX. 1 IN.
 - C. CONDUIT—NOM. 4 IN. DIAM. (OR SMALLER) STEEL ELECTRICAL METALLIC TUBING OR SLAB CONDUIT. THE ANNUAL SPACE SHALL BE MIN. 0 IN. TO MAX. 1 IN.
 - D. COPPER TUBING—NOM. 2 IN. DIAM. (OR SMALLER) TYPE L (OR HEAVIER) COPPER TUBING. THE ANNUAL SPACE SHALL BE MIN. 0 IN. TO MAX. 1 IN.
 - E. COPPER PIPE—NOM. 2 IN. DIAM. (OR SMALLER) REGULAR (OR HEAVIER) COPPER PIPE. THE ANNUAL SPACE SHALL BE MIN. 0 IN. TO MAX. 1 IN.
3. FIRESTOP SYSTEM—THE FIRESTOP SYSTEM SHALL CONSIST OF THE FOLLOWING:
- A. PACKING MATERIAL—FOAM BACKER ROD FIRMLY PACKED INTO OPENING AS A PERMANENT FORM. PACKING MATERIAL TO BE RECESSED FROM BOTH SURFACES OF WALL AS REQUIRED TO ACCOMMODATE THE REQUIRED THICKNESS OF FILL MATERIAL.
 - B. FILL, VOID OR CAVITY MATERIAL—CAULK—MIN. 1/2 IN. THICKNESS OF FILL MATERIAL APPLIED WITHIN THE ANNULUS, FLUSH WITH BOTH SURFACES OF WALL. AT THE POINT CONTACT LOCATION BETWEEN PIPE AND WALL, A MIN. 1/4 IN. DIAM. BEAD OF FILL MATERIAL SHALL BE APPLIED AT THE WALL/PIPE INTERFACE ON BOTH SURFACES OF WALL. THE RETORSEAL CORP.—BIOSTOP 500+

PLUMBING NOTES

- P-1: PROVIDE WATER HAMMER ARRESTERS PER 2018 NSPC 10.14.7.
- P-2: CONTRACTOR IS RESPONSIBLE FOR ALL WORK, MATERIALS, AND LABOR TO SATISFY A COMPLETE WORKING SYSTEM WHETHER SPECIFIED OR IMPLIED.
- P-3: ALL WORK IS TO BE PERFORMED IN STRICT COMPLIANCE WITH THE 2022 NATIONAL STANDARD PLUMBING CODE, ALL LOCAL CODES, AND ALL OTHER REGULATIONS GOVERNING WORK OF THE NATURE.
- P-4: CONTRACTOR SHALL, BEFORE SUBMITTING ANY PROPOSAL, EXAMINE THE PROPOSED SITE AND SHALL DETERMINE FOR HIMSELF THE CONDITIONS THAT MAY AFFECT THE WORK. NO ALLOWANCE SHALL BE MADE IF THE CONTRACTOR FAILS TO MAKE SUCH EXAMINATIONS.
- P-5: UNDERGROUND WATER SUPPLY PIPING SHALL BE TYPE "K" SOFT DRAWN COPPER TUBING WITH BRAZED CONNECTIONS OR PLASTIC PE PIPE. COORDINATE WITH LOCAL CODE OFFICE FOR REQUIREMENTS AND STANDARDS.
- P-6: ABOVE GROUND WATER SUPPLY PIPING SHALL BE PEX PIPING WITH ASSOCIATED FITTINGS, OR TYPE "L" HARD DRAWN COPPER TUBING WITH 125 PSI SOLDER JOINTS WITH COPPER OR BRASS FITTINGS.
- P-7: ALL COLD WATER PIPING TO BE INSULATED WITH 1/2" FOAM INSULATION, MINIMUM.
- P-8: ALL HOT WATER PIPING TO BE INSULATED WITH 1 1/2" FOAM INSULATION, MINIMUM.
- P-9: DRAINAGE PIPING SHALL BE RUN AS STRAIGHT AS POSSIBLE AND SHALL HAVE LONG TURN FITTINGS.
- P-10: DRAINAGE PIPING 3" SIZE AND SMALLER SHALL RUN AT A UNIFORM GRADE OF AT LEAST 1/4" PER FOOT, AND PIPING LARGER THAN 3" SHALL BE RUN AT A GRADE OF NO LESS THAN 1/8" PER FOOT.
- P-11: ALL VENT PIPING SHALL BE SLOPED TO DRAIN BACK TO FIXTURES.
- P-12: CONTRACTOR SHALL BE RESPONSIBLE FOR THE PROPER FLASHING OF THE VENT PIPING RUN THROUGH THE ROOF.
- P-13: ALL STUB-INS AND/OR SLAB OR WALL PENETRATION TO BE PER 2018 NSPC. ALL PIPING PENETRATIONS OF BUILDING FOUNDATIONS OR FOOTINGS SHALL BE SLEEVED.
- P-14: ABOVE GRADE PIPE SUPPORT SHALL BE SUPPORTED FROM BUILDING STRUCTURE IN A NEAT AND WORKMANLIKE MANNER. THE USE OF WIRE AND PERFORMED METAL TO SUPPORT PIPES WILL NOT BE PERMITTED. SPACING OF PIPE SUPPORTS SHALL BE AS SPECIFIED IN CHAPTER 8 OF 2018 NSPC.
- P-15: BELOW GRADE PIPE SUPPORT: EARTH SHALL BE EXCAVATED TO A MINIMUM DEPTH WITH AN EVEN SURFACE TO INSURE SOLID BEARING OF PIPE FOR ITS ENTIRE LENGTH. INTERIOR: THE PIPE SHALL BE INSTALLED (UNLESS OTHERWISE SPECIFIED) A MINIMUM OF 4 INCHES BELOW THE BOTTOM OF THE SLAB AND SHALL NOT BE IN ANY DIRECT CONTACT WITH THE CONCRETE AT ANY POINT.
- P-16: DO NOT SCALE DRAWINGS FOR EXACT DIMENSIONS. VERIFY ALL FIGURES, CONDITIONS, AND DIMENSIONS AT THE JOB SITE.
- P-17: THE PLUMBING PLANS ARE INTENDED TO BE DIAGRAMMATIC AND ARE BASED ON ONE MANUFACTURER'S EQUIPMENT. THEY ARE NOT INTENDED TO SHOW EVERY ITEM IN ITS EXACT LOCATION. THE EXACT DIMENSIONS, OR ALL THE DETAILS OF THE EQUIPMENT, THE CONTRACTOR SHALL VERIFY THE ACTUAL DIMENSIONS OF THE EQUIPMENT PROPOSED TO ENSURE THAT THE EQUIPMENT WILL FIT IN THE AVAILABLE SPACE.
- P-18: PLUMBING SYSTEMS SHALL BE FLOW AND PRESSURE TESTED IN ACCORDANCE WITH STANDARD PRACTICE AND THE 2018 NATIONAL STANDARD PLUMBING CODE (NSPC).
- P-19: MATERIALS, EQUIPMENT AND INSTALLATION SHALL BE GUARANTEED FOR A PERIOD OF ONE (1) YEAR FROM DATE OF ACCEPTANCE. DEFECTS WHICH APPEAR DURING THAT PERIOD SHALL BE CORRECTED AT CONTRACTOR'S EXPENSE.
- P-20: FOR THE SAME PERIOD, THE PLUMBING CONTRACTOR SHALL BE RESPONSIBLE FOR ANY DAMAGE TO PREMISES CAUSED BY DEFECTS IN WORKMANSHIP OR IN THE WORK OR EQUIPMENT FURNISHED AND/OR INSTALLED BY HIM.
- P-21: REMOVE 6 EXISTING WATER CLOSETS PROVIDE 6 NEW PRE-K HEIGHT WC CONNECT TO EXISTING SAN, VENT, & CW PIPES. RE-USE EXISTING FLUSH VALVES, PROVIDE FLUSH VALVE EXTENSION TUBE TO ACCOMMODATE LOWER TOILET HEIGHT.
- P-22: REMOVE 4 EXISTING WATER CLOSETS PROVIDE 4 NEW PRE-K HEIGHT WC CONNECT TO EXISTING SAN, VENT, & CW PIPES. RE-USE EXISTING FLUSH VALVES, PROVIDE FLUSH VALVE EXTENSION TUBE TO ACCOMMODATE LOWER TOILET HEIGHT.
- P-23: REMOVE 4 EXISTING WATER CLOSETS PROVIDE 4 NEW PRE-K HEIGHT WC CONNECT TO EXISTING SAN, VENT, & CW PIPES. RE-USE EXISTING FLUSH VALVES, PROVIDE FLUSH VALVE EXTENSION TUBE TO ACCOMMODATE LOWER TOILET HEIGHT.

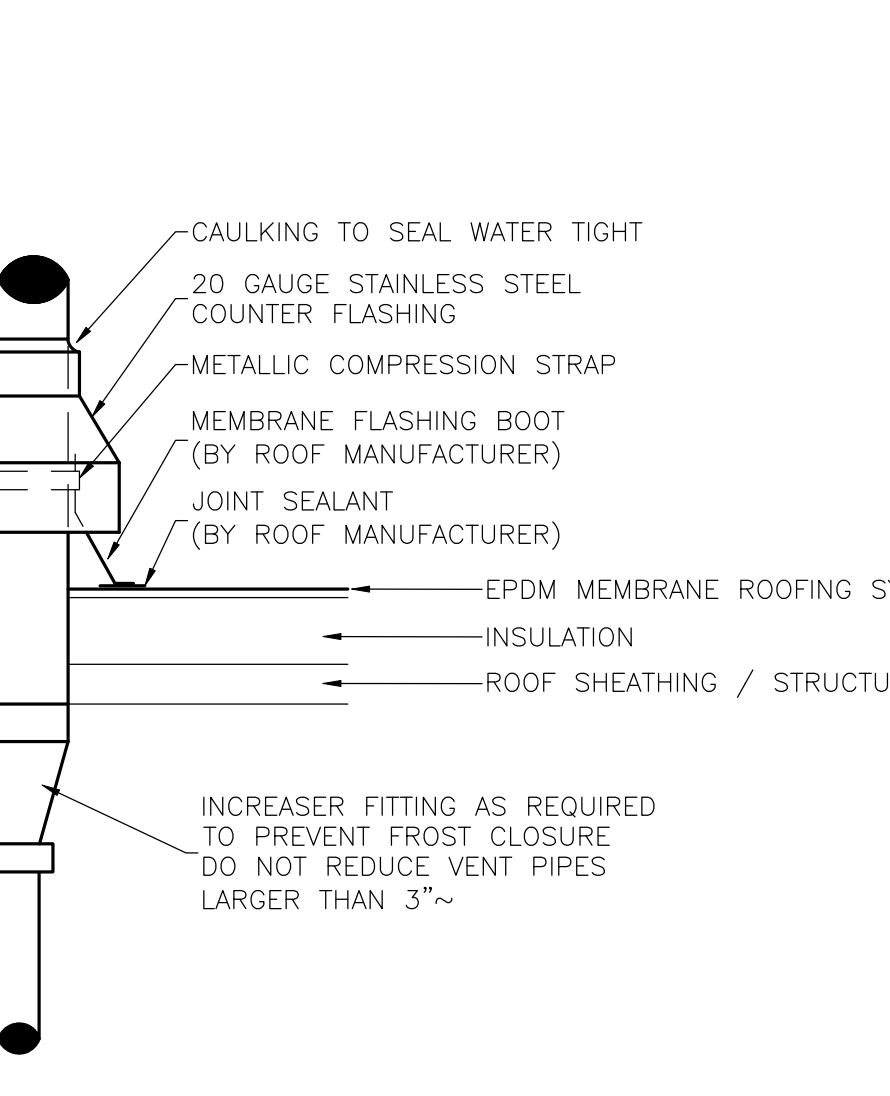
2 RATED WALL PENETRATION DETAIL



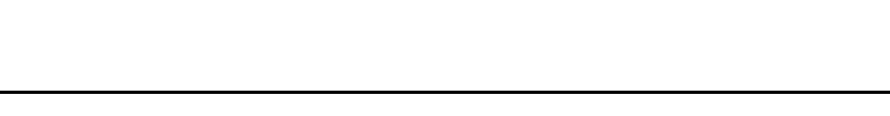
PLUMBING SYMBOLS

| SYMBOL | DESCRIPTION |
|----------|---|
| E-CW | EXISTING COLD WATER |
| E-DHWR | EXISTING DOMESTIC HOT WATER RETURN |
| E-DHW | EXISTING DOMESTIC HOT WATER SUPPLY |
| E-SAN | EXISTING SANITARY |
| CND | CONDENSATE |
| CW | COLD WATER |
| SAN | SANITARY |
| ---- | SANITARY VENT |
| DHWR | DOMESTIC HOT WATER RETURN |
| DHW | DOMESTIC HOT WATER SUPPLY |
| CO | FLOOR CLEAN OUT |
| WCO | WALL CLEAN OUT |
| VTR | VENT THROUGH ROOF |
| V. T. R. | FLOOR DRAIN |
| FD | MIXING VALVE |
| HB-NF | HOSE BIBB, NF INDICATES NON-FREEZE TYPE |
| CV | CHECK VALVE |
| BV | BALL VALVE |
| U | UNION |
| BA | BALANCING VALVE |

3 PLUMBING PIPE SUPPORT DETAIL #2



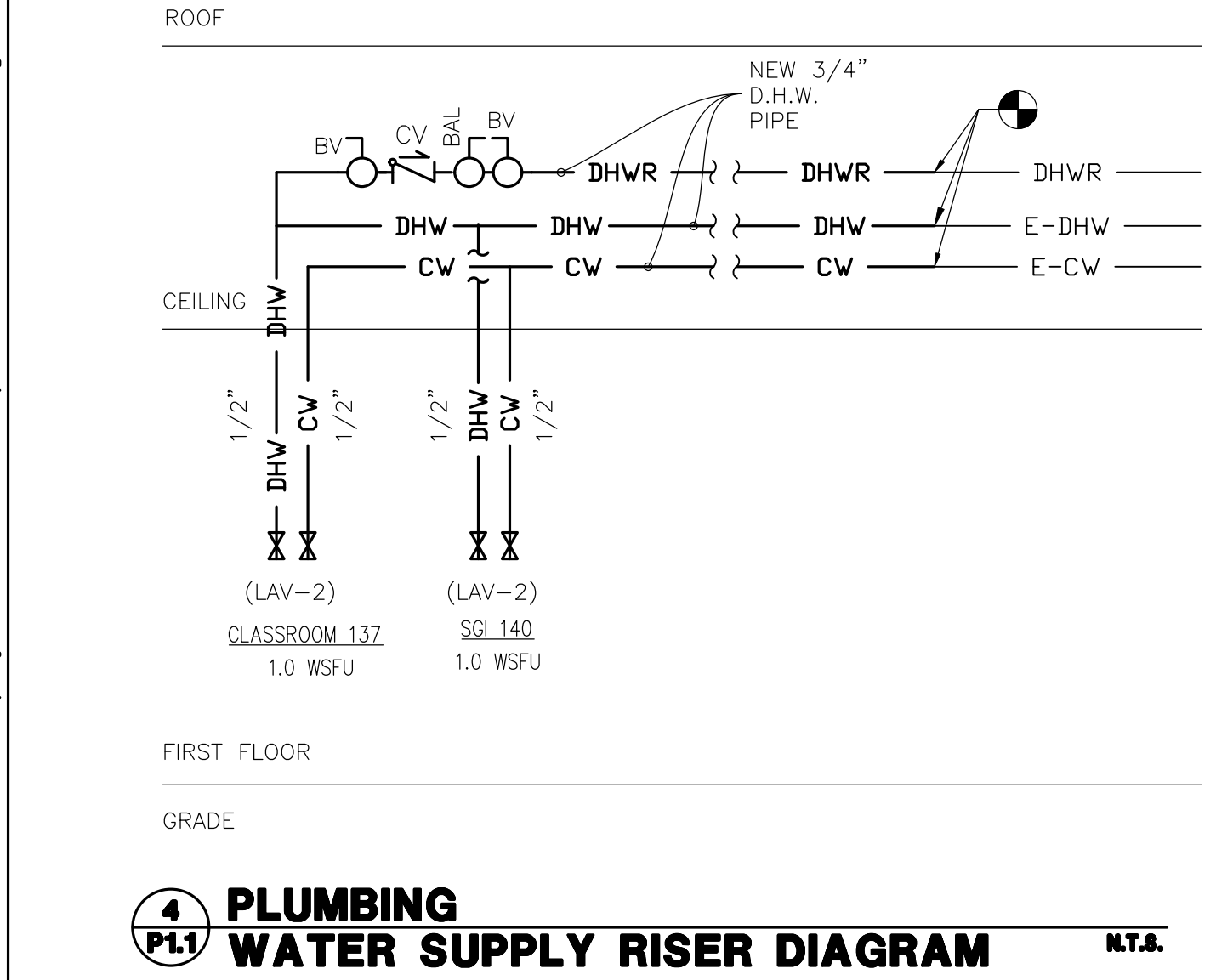
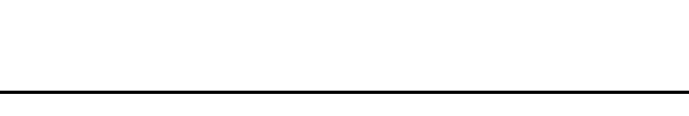
6 PLUMBING PIPE PENETRATION AT ROOF



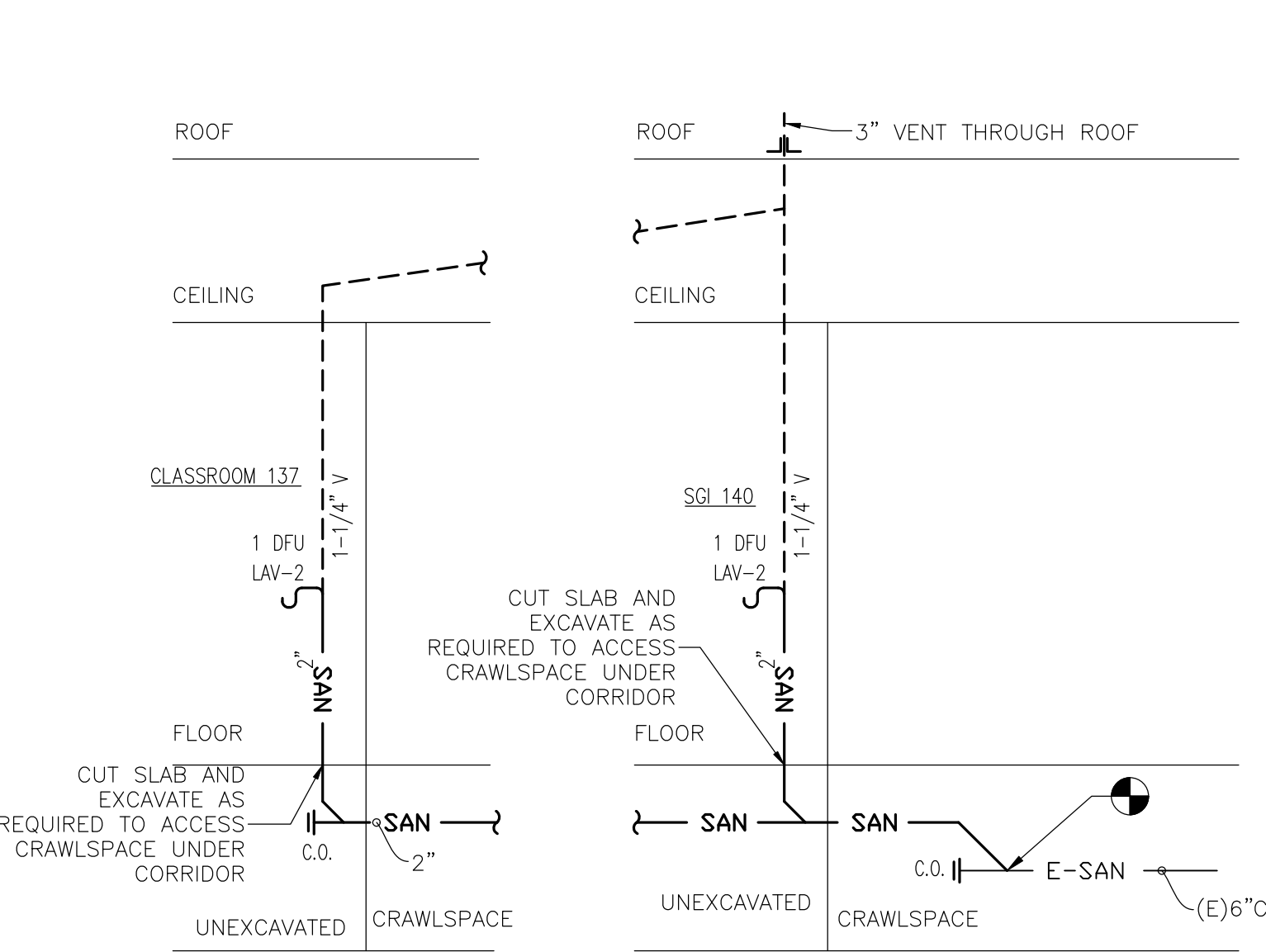
7 PLUMBING TRAP ARM LENGTH



8 PLUMBING WALL CLEANOUT



4 PLUMBING WATER SUPPLY RISER DIAGRAM



5 PLUMBING SANITARY RISER DIAGRAM



4 PLUMBING WATER SUPPLY RISER DIAGRAM

| DATE | No. | REVISION |
|---------|-----|------------------|
| 5/27/26 | | RELEASED FOR BID |

SCHAEFER KIENINGER ENGINEERING GROUP
 813 Route 9 South Cape May Court House, NJ 08204
 8 Todd Kieninger, Professional Engineer Lic# 3540333

LOT 4
BURLINGTON COUNTY
EVANS ELEMENTARY SCHOOL
 400 NJ-78, MARLTON, NJ 08053
EVESHAM TOWNSHIP SCHOOL DISTRICT
 PROJECT APPLICATION
 SCHEMATIC AND FINAL SUBMISSION - STATE PLAN NO. 05-1420-01-26-XXXX
 SUPERVISOR: MR. JIMMY SMITH
 BOARD PRESIDENT: MR. JAMES LAUTMAN
 Linda M. Vitelli, AIA, Secretary/Treasurer
 New Jersey Architect Lic# 231000000, P.E. Lic# 353000000
 Drew C. Daigler, AIA, President
 New Jersey Architect Lic# 231000000

THE DESIGN COLLABORATIVE
 ARCHITECTS AND PLANNERS, P.A.
 1800 ROUTE 9 NORTH, CAPE MAY COURT HOUSE, NEW JERSEY, 08204
 PHONE: 609 465 9388
 FAX: 609 465 9388
 WWW.TDCARCHITECT.COM

SCALE: AS NOTED DRAWN BY: PTK
 COMM. No. 8372 CHECKED BY: PTK
 DATE: 05-05-2026
 SHEET TITLE: PLUMBING PLAN
 SHEET No.: P-11

FILE G:\Shared drives\SKED\code files\2 TIC Projects\Evesham Township\Evans_Collab\evans_wpe.dwg DATE 5/27/2026 8:24 AM USER skeng